

RIHM MONTHLY

WINTER PROTECTION & SAFETY | DECEMBER 2022



NEW PRODUCT OFFERING: WeatherTech Products

WeatherTech[®]



Eberspächer

MINNESOTA | WISCONSIN | SOUTH DAKOTA

RIHMFAMILYCOMPANIES.COM 800.988.8235

THE INSIDE LOOK

Wishing Everyone Magical Memories this Holiday Season

Dear Rihm Team Members, Customers and Friends,

No matter how you celebrate this season, I hope you can enjoy your traditions in grand style!

What is your favorite holiday memory? Hopefully you all can recall that one time when it really felt magical.

I will share mine...

When I was about five years old, my brother and I woke up early and of course ran to the basement where our Christmas tree and fireplace were located to see if Santa brought what we asked for. We had left cookies and milk for Santa Claus, and they were gone so we were kind of surprised when there weren't many packages left for us. We had been good kids!

Then we found a note from Santa telling us he couldn't fit our presents down the chimney! What? Mom and Dad suggested we just go have breakfast and then figure out what that meant. I think we were pretty bummed out at that point, but were looking forward to seeing our cousins, aunts, and uncles later that day so the mood remained jolly.

After breakfast, my brother had to feed our dog who lived in a kennel out back. He went outside to grab his dishes from the night before and when he turned around to come back in the house, he started shouting! "Come and see!" We all scrambled out the back door to see what had him so excited! There were two bikes parked on the roof! One for him and one for me! What a shock and great surprise!

It took quite a few years before we heard the whole story of how Dad worked with our neighbor to stage the bikes, but it is still one Christmas I will always remember. Even as we did our best to surprise our kids, never have I heard a better way to keep the kids believing! What joy we felt to have brand new bikes to ride.

This story makes me think of the Christmas story of Jesus's birth when all those people around Bethlehem were shouting "Come and see!" and the joy they must have felt that day. That gift was way better than bikes!

Wishing you all a very joyful, warm, and memorable time with family and friends this year and a happy, healthy 2023.

*With great joy,
Kari Rihm*



Author: Kari Rihm
President & CEO
Rihm Family Companies

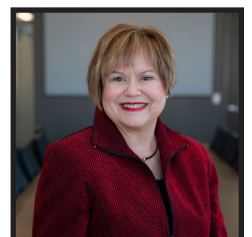


TABLE OF CONTENTS

FEATURES

Service Specials	3
WeatherTech Products	8
Meet Your Parts Professional	9
RMC Truck Parts	9-10
Rihm History Fun Fact	13



CONTRIBUTIONS

Service Tips - Tech Talk	4
Body Shop - Choosing a Commercial Collision Repair Facility	6
Parts Deals & Specials	7-14
Truck Financing Special Offer	15
Truck Sales	16
Rihm Leasing	17



RECOGNIZED DAYS THIS MONTH

World HIV and AIDS Day: **12/1**
 International Day of Persons with Disabilities: **12/3**
 International Human Rights Day: **12/10**

Hanukkah: **12/18 - 12/26**
 Christmas Eve: **12/24**
 Christmas Day: **12/25**

Kwanzaa: **12/26-1/1**

All prices & products listed in this booklet are only available while supplies last, and may only be redeemed for products or services purchased between **December 1, 2022 - December 31, 2022**. No substitutions or rain checks will be allowed. Coupons cannot be redeemed for a cash value. Discounts, prices and/or coupons cannot be applied to previous purchases, or towards any product purchases made outside the designated dates. Online Parts Counter coupons are only redeemable online & will not be recognized for in-store purchases.

DON'T FREEZE...TAKE ACTION INSTEAD!

GET READY FOR WINTER WITH OUR

WINTER READY SERVICE SPECIALS



\$399

an upcharge may be required to cover parts costs on some air dryer assemblies

WINTERIZING PACKAGE:

- wiper blades replacement
- purge valve replacement
- air dryer cartridge replacement
- visual inspection of belts, hoses & HVAC operation
- draining & inspection of air tanks
- test of coolant freeze point
- load test batteries & inspection
- block heater & cord inspection & test

\$208⁵⁰

listed price does not include additional repairs

ESPAR HEATER MAINTENANCE PACKAGE:

- 1.5 hour inspection
- glow pin screen replacement
- integrated fuel filter



*Parts and labor included in promotional price.
Valid for related services completed between 9/1/22 - 12/31/22*

800.988.8235

SERVICE TIPS

"An ounce of prevention is worth a pound of cure."

Tech Talk

Oooh, it's cold out here... could I have done something to prevent currently being stuck in the middle of nowhere with no heat and no way to get anywhere? I guess maybe I could have put on my chains before the truck started going off-road and digging these huge ruts... unfortunately it's probably not going to be easy to get the chains on now. Maybe it really is true that an ounce of prevention is worth a pound of cure.

Well at least I have my heater that I turn on to stay warm and toasty while I call and wait for a tow. At least these Espar heaters never need any preventative maintenance or inspection... wait now what's wrong?! My heater won't start up! Oh man... this is going to make things not just uncomfortable but possibly life threatening if the tow truck can't help me out really soon.

This is an example of a situation that nobody wants to find themselves in during the coming cold months of winter. Yet, you can be sure that if you don't prepare all your trucks for any unexpected weather now, and get ahead of any possible breakdowns, that there is a high chance that more stories like this one will happen. Here are some of my recommendations and tips of things to do to help decrease the chances of this happening to any of your trucks this winter.

Three of the most common reasons for Espar heater stoppage are:

1. Fuel lines are not tight. There can't be any air entering the fuel system of the Espar. Air entry can be caused by loose fittings in the fuel system as well as lines rubbing and allowing air entry. Before it gets any later in the season, go over the fuel system, grab the hoses, and ensure that all hold downs are tight, and fittings are secure.

2. Blower will shut down. The Espar heater is built to stop if it sees an issue. The blower will shut down if any type of blockage is sensed in either the inlet, outlet or exhaust systems for safety reasons. Ensure that all these areas are clear, and tubes are not compressed or have foreign materials in them. The Espar has been noted to sense something even small, like a leaf, in an exhaust tube and shut down over time, only to start back up and run for a short time again until the leaf is sensed again.

3. Fuel filter clogs. If the Espar is not allowed to clear the lines fully before shutting down, it can cause the fuel filter to become clogged over time. This is a common occurrence due to drivers not wanting to lose any extra seconds waiting for the heater to shut down completely. I recommend asking your drivers to weigh the true benefit of gaining those few extra seconds as opposed to potentially increasing their chances of having to sit in the cold on a 10-degree night without a working heater.

A little common sense preventive maintenance can go a long way towards ensuring a more comfortable and safe trip for all drivers. This includes having any trucks ready with tire chains ahead of time. A driver can never truly know what type of situation they may run into that requires getting off the road in order to complete a load. In these situations, tire chains can go a long way to ensuring the driver, and delivery, are successful.

There are two common methods for installing tire chains, which are draping the chains, or rolling them up with the tire. Either option works with varying degrees of success in different situations. However, the key to proper tire chaining includes steps that can be done now, before the chains are ever needed, such as test fitting

and inspecting them for any breaks and damage.

To do this, simply just:

1. Lay the chain out flat on the ground.
2. Check the main and side chains for any bent or worn links and remove kinks as needed.
3. Inspect all cross chains as well for damages and remove kinks as needed.
4. Check the chain's end fittings for bends and wear.
5. Then test fit the chains, so they are fully ready to be used in the future. This will also help give you a good idea of which link will need to be hooked initially for a proper fit when needing to use the chains on the road.

Also be aware of potential chain slack, as too much slack can cause the chain to flail around and damage your truck, as well as become a potential hazard to others on the road. Have zip-ties handy in your trucks for tying adjacent links. Going as tight as you can with each cam will minimize the damage that can be caused by chain slack as well.

When using rubber straps to remove side slack from chains, be sure to keep them evenly spaced and secure to tighten the entire set up. Whether using spider bungees, or rubber straps, make sure to have all the hooks facing outwards instead of into the tire so that they do not rub and damage the tires, especially during times of extended use.

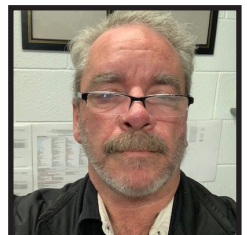
Also make sure to properly seat the chains after installing them. Road space can be limited during a storm so this can be done using one of these two methods: Either move the truck ahead 50' or move back and forth 20' each time. This will seat the chains down into the treads. Get out and recheck your chains after seating. Pull on them and check for slack. If slack is found, tighten up cams as needed or undo the end and take out a link.

As you may already know, it is much easier and less expensive to put the chains on as a preventative measure, even if they end up not being needed, than it is to try and get them on after getting stuck or having to call a tow truck to get the unit out of a sticky situation.

Living in Minnesota, we all know the risks of getting out into nature during the cold months of winter. Many times, though, we don't think of driving vehicles as risky, and end up taking the vehicle's ability to get from point A to point B for granted. To ensure the warmth and safety of you or your driver I highly recommend following these preventative winter tips, but also to always bring along proper clothing as a regular part of the truck's everyday load. This will help be prepared in the case of an unexpected breakdown or snowstorm happening. The best winter clothing to have available should include at least: gloves for chaining, heavy duty pants and a warm coat.

Keep safe out there!

Author: Doug
Service Manager, Winona
34 Years of Experience



Keep away the **CHILL** this winter with Espar heaters!



- INCREASE DRIVER RETENTION
- KEEP DRIVERS WARM & COMFORTABLE
- CONSERVE RESOURCES
- REDUCE FUEL COSTS

PART DESCRIPTION	PART #	PRICE
INTEGRATED FUEL FILTER	20.1312.00.0006.0Z	\$3.27
ESPAR AIRTRONIC D2 12V TRUCK KIT	20.2781.10.0222.0Z	\$436.07
CONTROLLER ELECTRONIC DIGITAL	20.2800.70.1500.0Z	\$91.42
INSTALL KIT - AIR S2 D2L 12V WITH EPRO U/P	20.2827.21.0201.0Z	\$1,593.10
METERING PUMP	22.4519.01.0000.0Z	\$169.47
BLOWER GASKET D2 AIR	25.2069.01.0003.2Z	\$4.93
FLAME/OVERHEAT SENSOR D2/4 AIRTRONIC	25.2069.01.0200.2Z	\$56.88
GLOW PIN 12V WITH WRENCH D2/4 AIRTRONIC	25.2069.01.1300.2Z	\$161.99
HEATER- D2 AIRTRONIC 12V	25.2069.05.0000.0Z	\$988.00
THERMAL INSULATOR FOR AIRTRONIC D2 BURNER	25.2069.06.0001.2Z	\$3.65
BURNER-HEATER, AIRTRONIC D2	25.2069.10.0100.2Z	\$199.07
GLOW PIN SCREEN D2/D4 AIRTRONIC	25.2069.10.0102.2Z	\$8.17
AIR BLOWER 12V D2	25.2069.99.2000.0Z	\$255.85



Airtronic D2



Airtronic D4

**CONTACT YOUR LOCAL RIHM KENWORTH LOCATION
TO ORDER A NEW HEATER PART AND/OR SYSTEM**

OR

**BOOK A SERVICE APPOINTMENT TO GET ANY ALREADY
INSTALLED ESPAR HEATERS CHECKED & SERVICED**

CHOOSING A COMMERCIAL COLLISION REPAIR FACILITY

Accidents happen, but where should you take trucks when they do?


FINDING THE RIGHT COMMERCIAL COLLISION REPAIR FACILITY:

QUESTIONS TO CONSIDER WHEN CHOOSING WHERE TO TAKE YOUR TRUCK FOR REPAIRS AFTER AN ACCIDENT HAPPENS

So you had an accident... once everything is settled at the accident site, then the next step is to choose where you would like to bring your commercial vehicle to be repaired. There are many factors to consider when deciding. Here are some of the main questions we recommend asking yourself while making this decision. We have also provided explanations of how our Rihm Kenworth Body Shop in Coon Rapids holds up to every single one.

See for yourself how our body shop checks all the boxes!

9400 Evergreen Blvd
Coon Rapids, MN 55433
651.236.6080



Is the shop equipped to handle the repair? Does it have frame, alignment and other services available all at one location?

At Rihm Kenworth we can do the entire repair at one location. No delays! We control the repair and do not have to rely on another shop...ever!

Does the shop have the experienced technicians to repair your vehicle?

At Rihm Kenworth our shop has technicians with over 150 years of combined experience.

Does the shop work directly with your insurance company to expedite the repair process?

At Rihm Kenworth we work directly with all the nation's leading insurance companies. This relationship allows for a faster, and more hassle free, claim process for all our customers.

Does the shop offer a workmanship warranty?

At Rihm Kenworth we offer a lifetime warranty on all our repairs for as long as you own the vehicle!

Does the shop have the capacity to do the repair on your truck?

Our shop in Coon Rapids offers extended hours to help serve the needs of our customers. We are open from 6:00am to 8:30pm Monday through Friday.

PREVENT WINTER PROBLEMS

Parts to help drivers deliver winter goods safely.



DIESEL ADDITIVES

PART DESCRIPTION	PART #	PRICE
DIESEL FUEL ANTIGEL +CETANE BOOST 32OZ	1025-12	\$6.95
DIESEL 9-1-1 32OZ	8025-12	\$6.52



HEATED HEADLIGHTS

PART DESCRIPTION	PART #	PRICE
4"X6" HEATED HEADLIGHT 8800 EV2 LED LB	0551771JWS	\$190.02
4"X6" HEATED HEADLIGHT 8800 EV2 LED HB	0551781JWS	\$190.02



SERIES	SIZE	TYPE
56 SERIES (BOLT ON BLADE)	12" - 20"	FULL KIT
56 SERIES (BOLT ON BLADE)	12" - 20"	REPLACEMENT
56 SERIES (BOLT ON BLADE)	12" - 20"	SINGLE KIT
56 SERIES (BOLT ON BLADE)	21" +	FULL HD KIT
56 SERIES (BOLT ON BLADE)	21" +	SINGLE HD KIT
56 SERIES (BOLT ON BLADE)	21" +	REPLACEMENT KIT
66 SERIES (FRAME BLADE)	12" - 28"	FULL KIT
66 SERIES (FRAME BLADE)	12" - 28"	REPLACEMENT
66 SERIES (FRAME BLADE)	12" - 28"	SINGLE KIT
66 SERIES (BEAM BLADE)	12" - 28"	FULL KIT
66 SERIES (BEAM BLADE)	12" - 28"	REPLACEMENT
66 SERIES (BEAM BLADE)	12" - 28"	SINGLE KIT

EVERBLADES HEATED WIPER BLADES



CONTACT YOUR RIHM KENWORTH PARTS SALES REPRESENTATIVE TO GET A PERSONALIZED QUOTE FOR YOUR SPECIFIC NEEDS.

WeatherTech®

Now available at all
Rihm Kenworth dealerships!



PART DESCRIPTION	PART #	PRICE
BLACK LASER MEASURED FLOOR LINER - FITS: 2013-2021 KW T680, KW 2014-2021 T880, 2014-2021 PB 567, 2013-2021 PB 579	4416251V	\$132.95
BLACK LASER MEASURED FLOOR LINER - FITS: 2018-2021 FL CASCADIA, 2021-2022 49X (AUTOMATED TRANS)	4416301V	\$132.95
BLACK LASER MEASURED FLOOR LINER - FITS 2018-2023 VOLVO VNL & 2018-2023 VNR (AUTOMATED TRANS)	4416671V	\$132.95

Protect ANY vehicle's interior!

Ask your Rihm parts rep. for a custom quote on products for both commercial & personal vehicles, or any other product sold by WeatherTech!



GREAT PRODUCTS FROM THE BRAND YOU TRUST



AIR DRYERS & ACCESSORIES



AD-IS DRYER ASSEMBLY,
OIL COALESCING, SOFT SEAT

801266SSRMC \$231.07



AD-IS DRYER ASSEMBLY,
OIL COALESCING, HARD SEAT

801266RMC \$228.45



AD-9 AIR DRYER

109685RMC \$153.66



AIR DRYER ASSEMBLY AD-IP

65612RMC \$211.48

AIR DRYERS



AIR DRYER ASSEMBLY AD-IP

065624RMC \$89.16



AIR DRYER CARTRIDGE AD-9

107794RMC \$31.68



AIR DRYER ASSEMBLY SS1200

R955205RMC \$130.80



AIR DRYER CARTRIDGE

109994RMC \$16.51

Meet Your Parts Professional



Travis Olmscheid
Outside Parts Sales Rep.
South St. Paul, MN

Travis has been involved in the trucking industry for the last 14 years, with the last 5 being spent here at RiHM. We asked Travis some questions about what he enjoys about his job and activities he does for fun outside of work. Read his answers below!

What is your favorite thing about your job?

"The diversity of trucking companies I get to work with - from huge fleets, to construction companies, to independent repair facilities. Being able to interact with such a wide variety of people and see the variety of equipment and how it is being used is very fun."

What is something you enjoy to do after work?

"Our family enjoys time at our cabin in Battle Lake, MN. We go boating, jet skiing and on 4-wheeler rides in the summer as well as going ice fishing and snowmobiling in the winter."

Do you have a favorite hobby? What is it?

"I really enjoy cooking, particularly BBQ. I have been honing my skills for a few years now and just love seeing people enjoy something I have prepared. My family and friends are always sending me new recipe ideas or videos of things I should try to make."

What is a favorite trip/vacation that you've taken?

"The Pacific Northwest. Specific locations would be, Lake Crescent, the Hoh Rainforest and Cannon Beach (Haystack Rock). We have been out there several times and it has been amazing every time. The huge trees, mountains and ocean views are breathtaking."

ABS SPEED SENSORS



ABS SPEED SENSOR 15.75"

4410329212RMC \$39.87



ABS SPEED SENSOR 75"

801538RMC \$44.58



ABS SPEED SENSOR 66"

801543RMC \$45.12



ABS SPEED SENSOR 36"

R955336RMC \$30.30

ABS SENSORS



ABS SPEED SENSOR 78"

R955342RMC \$41.23



AIR GOVERNOR

275491RMC \$14.82



AIR GOVERNOR HIGH TEMP

284358RMC \$12.57



AIR GOVERNOR (D2)

800361RMC \$14.91

PURGE VALVES



PURGE VALVE KIT 12V

800405RMC \$26.65



HARD SEAT PURGE VALVE
AD-IS

K022105RMC \$37.50



SOFT SEAT PURGE VALVE
AD-IS

K031560RMC \$195.97



HEATER THERMOSTAT KIT 12V

109495RMC \$15.66

HEATER

COUPON DISCOUNTS



DECEMBER SPECIALS

PART DESCRIPTION	COUPON CODE	DISCOUNT
CUMMINS 15L RECON ENGINES	M22DEC4187	\$300 OFF
CUMMINS GENUINE TURBO	M22DEC4186	\$75 OFF
CUMMINS FUEL PUMPS	M22DEC4184	\$40 OFF
CUMMINS CAMSHAFT	M22DEC4185	\$40 OFF
CUMMINS GENUINE HD DIESEL PARTICULATE FILTER	M22DEC4181	\$25 OFF
CUMMINS GENUINE TURBO ACTUATOR	M22DEC4182	\$25 OFF
CUMMINS GENUINE INJECTOR	M22DEC4183	\$25 OFF
TRP® STEEL JACKET BRAKE DRUMS	M22JULDEC3906	\$20 OFF
TRP® EXHAUST MUFFLER SHIELDS	M22DEC4097	\$12 OFF
TRP® EXHAUST STACKS	M22DEC4100	\$12 OFF
CUMMINS GENUINE WATER PUMP	M22DEC4180	\$10 OFF
TRP® BRAKE CAMSHAFT & CAMSHAFT KITS	M22JULDEC3907	\$2 OFF



TRP® BELTS

Listed price includes
\$2.00 OFF
 with coupon code
Y223275

PART DESCRIPTION	PART #	PRICE
BELT-V 17/32 TW X 42 1/2 EL	17425BLT	\$7.55
BELT-V 17/32 TW X 44 1/2 EL	17445BLT	\$9.21
BELT-V 17/32 TW X 45 EL	17450BLT	\$7.65
BELT-V 17/32 TW X 46 EL	17460BLT	\$8.68
BELT-V 17/32 TW X 47 EL	17470BLT	\$7.89
BELT-V 17/32 TW X 52 1/2 EL	17525BLT	\$8.75
BELT-V 17/32 TW X 55 1/2 EL	17555BLT	\$9.01
BELT-V 17/32 TW X 59 EL	17590BLT	\$8.55
BELT-V 17/32 TW X 61 EL	17610BLT	\$10.52
BELT-V 22/32 TW X 54 1/2 EL	22550BLT	\$12.00
BELT-V 22/32 TW X 56 1/2 EL	22570BLT	\$13.65
BELT-V 28/32 TW X 43 1/2 EL	28437BLT	\$12.18
BELT-V 28/32 TW X 48 EL	28483BLT	\$13.57
BELT-POLY 6 RIBS X 53 5/7 EL	537K6BLT	\$12.69
BELT-POLY 6 RIBS X 61 EL	610K6BLT	\$14.51
BELT-POLY 6 RIBS X 63 4/5 EL	638K6BLT	\$14.78
BELT-POLY 8 RIBS X 82 1/2 EL	825K8BLT	\$26.10
BELT-POLY 8 RIB X 96.2" EL	962K8BLT	\$30.77

CLEARANCE CORNER

Parts from the South St. Paul store that **MUST** go!

LIMITED QUANTITIES AVAILABLE OF ALL CLEARANCE ITEMS

PART DESCRIPTION	PART #	QUANTITY AVAILABLE	PRICE
MODULE, INLET CATALYST	4353251RX	1	\$5,206.43
SCR - DEVICE, AFTERTREATMENT	4330154CUM	1	\$4,119.12
T800 LOGGER (BOX BUMPER) DEFENDER	KW13D4	1	\$3,608.00
SS1200 PLUS 24V	S4324700210	9	\$385.56
ALTERNATOR	BLP3384HMP	8	\$393.00
DEVICE, 2013 SCR	5505979CUM	2	\$1,455.34
MODULE, ELECTRO NIC CONTROL	4359433	1	\$2,856.11
FAIRING - FORWARD ASSY	A33-1199-2001	3	\$912.43
HEADLAMP ASSY DUAL RECT	P54-1289-100E	3	\$897.37
MODULE, INLET CATALYST	2871469RXCUM	1	\$2,600.19
SEAL-OIL	416112FDM	25	\$98.95
CABINET ASSY - RHL STORAGE	U29-1119-12200	1	\$2,398.21
KIT, PARTICULATE FILTER	5579352CUM	1	\$2,200.69
CROSS LINK ASSY - 72	822077	3	\$714.47

All listed Clearance Corner items are only available for purchase from the Rihm Kenworth dealership located in **South St. Paul, MN**. If you are unable to visit the South St. Paul location, please ask your local Rihm parts sales representative for shipping options & costs.



BLP3384HMP



KW13D4

Rihm Kenworth - South St. Paul
425 Concord St. South, South St. Paul, MN 55075 | 651.646.7833

SEATS INC.

Take a *SEAT* & relax going into the New Year!



PART DESCRIPTION	PART #	PRICE
PINNACLE BLACK / BLACK DURALEATHER	187300MW661	\$1,355.19
PINNACLE BLACK / GRAY DURALEATHER	187300MW665	\$1,355.19
PINNACLE WITH HEAT AND MASSAGE	187300MWO661	\$1,665.65
SEAT-LEGACY LO SUSP HB 4W AIR LUM BLA	188409MW61	\$958.69
SEAT-LEGACY LO SUSP HB 4W AIR LUM GRA	188409MW65	\$958.69
SEAT-LEGACY LO SUSP MB AIR LUM	188598FW631	\$1,665.65
SEAT-LEGACY LO SUSP MB 4W AIR LUM BLA	188598MW61	\$958.69
SEAT-LEGACY LO SUSP MB 4W AIR LUM GRA	188598MW65	\$958.69
SEAT-LEGACY SILVER HB 2W AIR LUM	188900FW631	\$747.27
SEAT-LEGACY SILVER HB 2W AIR LUM	188900FW635	\$747.27
SEAT-LEGACY SILVER HB 2W AIR LUM BLAC	188900MW61	\$811.13
SEAT-LEGACY SILVER HB 2W AIR LUM GRAY	188900MW65	\$811.13
SEAT-HERITAGE SILVER HB 20" 15D 2W	189800FA631	\$588.11
SEAT-HERITAGE SILVER HB 20" 15D 2W	189800FA635	\$553.00

THIS MONTH IN RIHM HISTORY...

December 2020 - Construction on the new dealership facility in Albert Lea, MN was completed around this time. The previous facility was closed and our team completely moved to the new dealership location on 209th Street, where we do business today.

WE MOVED!



PLEASE VISIT US AT
OUR NEW LOCATION!

77847 209th Street, Albert Lea



BRAKE DRUMS

We're *BRAKING* down the price for you!



TM

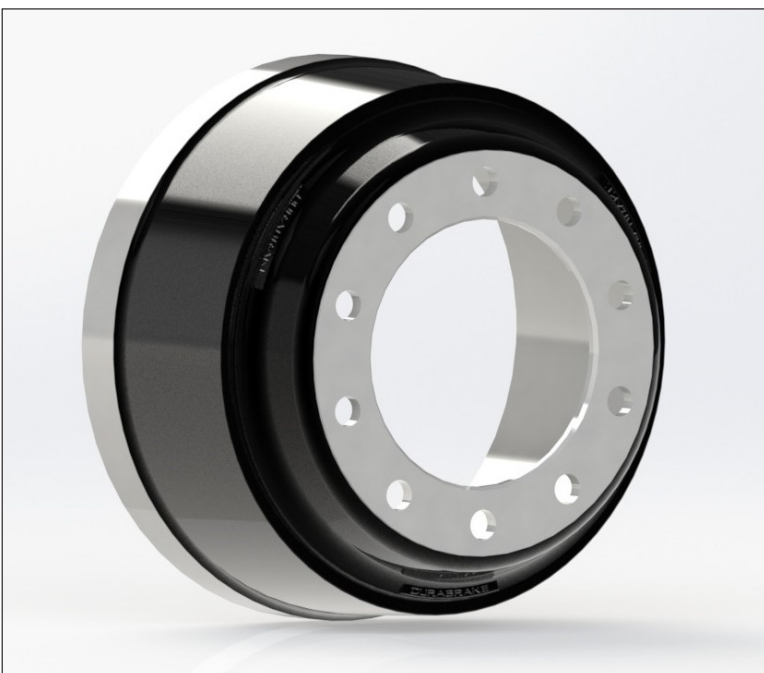
***\$184.91** each

16.5"x7" - 23K

TRP STEEL JACKET DRUM

PART #: DB123537

*Listed price includes an extra \$20 off
with coupon code M22JULDEC3906*



\$129.99 each

16.5"X7"

DURABRAKE CAST BRAKE
DRUM - BALANCED

PART #: 16792X

*Discounted pricing only available while
supplies last. No substitutions allowed.*

Call Today!

Rihm Kenworth will match up to

\$10,000

of your down payment when you finance used trucks through our approved lenders!



RIHM KENWORTH

- Offer available on select used truck inventory only.
- Offer eligibility with approved credit only.



**30
KENWORTH
T680s
IN STOCK**



Volvo VNLs with Workstation



Freightliner CASCADIAS with DT-12 Automatic



T680's with Cummins Power

**10
FREIGHTLINER
TRUCKS
2015-2019
TO PICK FROM**

Rihm Family Companies holds the right to end this offer at any time, without notice.

CONTACT US TO SEE IF YOU QUALIFY FOR THIS SPECIAL OFFER!

Lisa Mick | 651.649.5607 | lisa.mick@rihmfamilycompanies.com

TRUCK SALES

Learn more about your used truck sales representatives

MEET BEN SCHEIDEL

Q: How long have you worked for Rihm Kenworth and what do you find most exciting about your job here?

A: I have worked here a little over 2 ½ years. I enjoy meeting my customers, learning their stories and helping get them into a truck that will make them money, when we're the right fit. I love the sales support team, who help with all the paperwork, etc. and are extremely patient and kind with me when I create problems for them.

Q: What do you consider your greatest life accomplishment so far?

A: Helping raise our three children, who are all grown up now. I consider my parenting duties over for the most part, and now we can be friends, and I love their company...as long as they're not living in our house.

Q: Tell us a little about your life outside of Rihm.

A: I love bicycling and consider myself lucky that I'm able to commute to work by bicycle as long as the weather permits. Other interests are vegetable gardening, canoeing, hiking and camping in the warmer months and cross country skiing and snowboarding in the winter. Mankato has a great local art and music scene, and there is always something fun to do on the weekends.



MEET CLIFF CADWALLADER

Q: How long have you worked for Rihm Kenworth and what do you find most exciting about your job here?

A: Started at Rihm in April of 2005, and the thing I find most exciting about my job is when the customer is happy.

Q: What do you consider your greatest life accomplishment so far?

A: Raising my family to be good workers and good people.

Q: Tell us a little about your life outside of Rihm.

A: I like to travel, go boating, and hang out with friends and family.





RIHM LEASING



FULL SERVICE LEASING

FINANCIAL BENEFITS

- ▶ Manages your risk & improves cash flow
- ▶ Reduces your fleet costs
- ▶ Frees up your working capital
- ▶ Provides reliable, predictable fleet costs
- ▶ Minimizes your administrative overhead expenses



OPERATIONAL BENEFITS

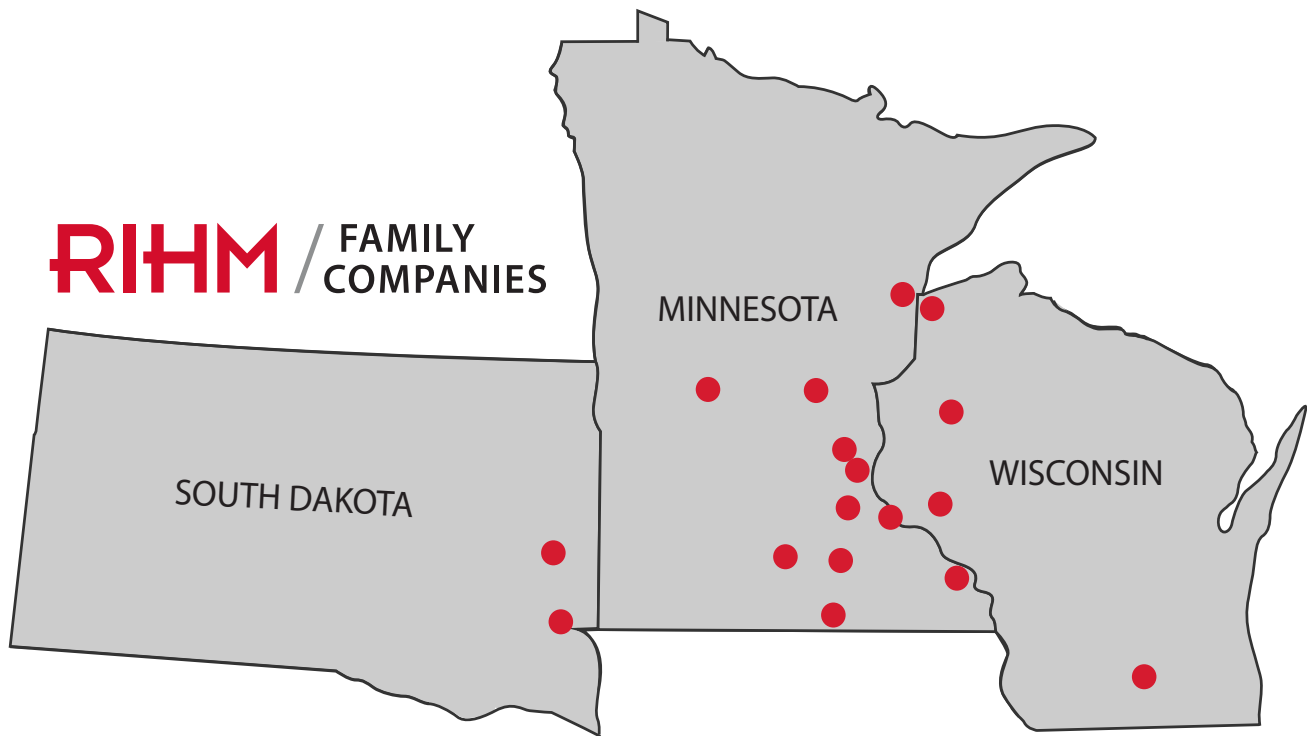
- ▶ Brand new premium Kenworth equipment tailored to meet your needs
- ▶ Allows you to focus on your core business
- ▶ Comprehensive maintenance programs designed to keep your fleet operating at peak efficiency
- ▶ Licensing & fuel tax management
- ▶ Rihm is a NationalLease & PacLease member meaning our lease customers receive 24/7 roadside assistance throughout the US



FULL SERVICE LEASE | RENTALS | FLEET & CONTRACT MAINTENANCE

CONTACTS & LOCATIONS

Multiple locations - for your convenience



MINNESOTA		WISCONSIN	SOUTH DAKOTA
<p>Albert Lea 77847 209th St Albert Lea, MN 56007 507.552.1340</p>	<p>Owatonna 3205 Hoffman Dr NW Owatonna, MN 55060 507.451.2990</p>	<p>Barron 1504 Guy Ave Barron, WI 54812 715.637.1301</p>	<p>Sioux Falls 4001 North Jessica Ave Sioux Falls, SD 57104 605.339.2927</p>
<p>Cloquet 801 Industry Ave Cloquet, MN 55720 218.879.2473</p>	<p>Red Wing 860 Bench St Red Wing, MN 55066 651.388.7067</p>	<p>Durand 904 West Prospect St Durand, WI 54736 715.279.3210</p>	<p>Volga 101 Industrial Dr Volga, SD 57071 605.937.4880</p>
<p>Coon Rapids 9400 Evergreen Blvd Coon Rapids, MN 55433 651.236.6080</p>	<p>Sauk Centre 805 Shamrock Ln Sauk Centre, MN 56378 320.352.8540</p>	<p>Madison 6025 Femrite Dr, Unit #1 Madison, WI 53718 608.224.0133</p>	
<p>Mankato 2401 9th Ave Mankato, MN 56001 507.550.3800</p>	<p>South St. Paul 425 Concord St South South St. Paul, MN 55075 651.646.7833</p>	<p>Superior 4501 Tower Ave Superior, WI 54880 715.395.5350</p>	
<p>Northfield 1720 Cannon Rd Northfield, MN 55057 507.645.1657</p>	<p>Winona 6830 Martina Rd Minnesota City, MN 55959 507.452.4400</p>		

*Happy Holidays
from the Rihm
Team!*

T680

