

# RIHM MONTHLY

After Treatment Systems & Earth Day | April 2023



Article Features: Celebrating 100 Years of Kenworth



MINNESOTA | WISCONSIN | SOUTH DAKOTA

RIHMFAMILYCOMPANIES.COM 800.988.8235

# THE INSIDE LOOK

## BATTERY ELECTRIC VEHICLES: KENWORTH'S HISTORY OF EMISSIONS REDUCTION



*Article provided by Kenworth Truck Company.*

Kenworth has a full line of battery electric trucks including the K270E, K370E and T680E. Kenworth has a long history of innovating to reduce emissions and explore alternative fuels. Kenworth developed and built LNG and CNG powered trucks in the mid 1990's and in 1996, Kenworth sold its first 10 Liquid Natural Gas trucks to Jack B. Kelly Company.

In 2007, Kenworth released its first hybrid as an optional powertrain on the T300 model. Dunn Lumber of Seattle was the first customer to run the technology that combined a 240 hp PX-6 diesel engine with transmission mounted motor/generator. The trucks saw up to 30 percent fuel economy benefit in some applications.

In 2016, Kenworth built two proof of concept trucks to test in Southern California Ports. One was a T680 with a CNG/Hybrid electric powertrain (HECT), and the other a T680 with a zero emission Hydrogen Fuel Cell powertrain (ZECT). Early development of Hydrogen Fuel Cell powertrains helped Kenworth embark on a 10-truck pilot program in the Port of LA in 2019. The ZANZEFF Shore to Store program funded 10 trucks to operate in drayage applications and compile valuable data on zero emission technology in real world operations.

Today Kenworth offers a full-service solution for converting fleets to zero emissions, including battery electric trucks, charging infrastructure and grant funding specialist to consult on purchases.

# TABLE OF CONTENTS

## FEATURES

The Inside Look - Battery Electric Vehicles	1
People on the Move	4
Article - Century of Innovation	6
Cummins Aftertreatment Systems	7-8
Article - Kenworth 100 Years	24



## CONTRIBUTIONS

Tech Talk - Triage Bays	3
Body Shop	5
Parts Deals & Specials	7-20
Truck Sales & Financing	21-22
Full Service Leasing	23



## RECOGNIZED DAYS THIS MONTH

National Volunteer Month: **4/1-30**  
Keep America Beautiful Month: **4/1-30**  
April Fools Day: **4/1**  
World Autism Acceptance Day: **4/2**

Easter: **4/9**  
Day of Silence: **4/14**  
National Volunteer Week: **4/17-23**  
Earth Day: **4/22**

World Malaria Day: **4/25**  
Arbor Day: **4/28**

All prices & products listed in this booklet are only available while supplies last, and may only be redeemed for products or services purchased between **April 1, 2023 - April 30, 2023**. No substitutions or rain checks will be allowed. Coupons cannot be redeemed for a cash value. Discounts, prices and/or coupons cannot be applied to previous purchases, or towards any product purchases made outside the designated dates. Online Parts Counter coupons are only redeemable online & will not be recognized for in-store purchases.

# TECH TALK

## THE REAL PURPOSE FOR HAVING A TRIAGE/EXPRESS BAY

Most of our Rihm Kenworth dealership service departments have designated drive-through, or triage, bays. Having specified triage bays benefits our customers by allowing a skilled diagnostic technician to efficiently provide each customer with an expert diagnosis and recommended course of action in a short time frame. A triage is typically completed within just two hours of the truck first checking in at the shop, but a triage bay should not be thought of as a repair bay in any way. Instead, the triage bay technician's sole purpose is to efficiently diagnose the vehicle's issue and then determine if the needed fixes qualify as quick or long repairs based on Kenworth's recommended diagnosis and repair process described below.

1st - A truck arrives with a complaint and goes to the triage bay.

2nd - The diagnostic technician in the triage bay will look at the complaint and perform a check-in inspection.

3rd - The diagnostic technician determines if this is a repair that can be classified as a quick repair or if it will require further diagnostics to be done.

**Quick Repair Bay** – Repairs that a diagnostic technician believes will take 4 hours or less to complete once started, but this does not mean it will be repaired immediately or even within 4 hours. This is because quick repairs typically account for up to 75% of the total jobs worked on in a shop.

However, being diagnosed as a quick repair does mean that the truck will be put into the list of work orders that the quick repair lane will then complete in the order of which they were received. The total time needed for quick repairs can vary depending on current technician availability and workloads in our shops.



**Long Repair Bay** – If it is determined that your truck will need additional diagnostics performed or a lengthy repair, then it will be assigned to the main shop and added to the work order list for the long repair technicians in our shop.

With all of that considered, the part that a triage bay plays in this process is being able to provide each of our customers with more information about the needed repairs right away at service check-in. This information then allows

owners and fleet managers to make an educated decision on how to proceed. This could include many decisions from waiting until later to have the repair done, to putting the driver in a hotel, scheduling the load to another driver, or even flying the driver home. These are all decisions that the owner or fleet manager will need to make based on the information provided from the triage.

Here at Rihm, we understand that for our customers any amount of downtime can be extremely costly. That is a large reason why we choose to have a skilled diagnostic technician focused solely on looking at trucks in the triage bay and determining if issues are critical enough that the truck should stay off the road, or if it is safe enough for the truck to continue being driven while a part is on order or other work orders are being completed.

In short, the main purpose of a triage bay is not to perform repairs quickly, but instead to accurately diagnose a complaint or issue on a truck right away. This timely information then gives the owner or fleet manager the ability to make an informed decision on how to move forward in the most economical way for their business.

*Authors: Cal Lamke and Megan Meier, Rihm Family Companies*

# PEOPLE ON THE MOVE

Rihm Family Companies is excited to announce the following “people on the move” within Rihm Kenworth!



## CAL LAMKE

Cal has been Rihm Kenworth’s Director of Service since 2021 and will be officially retiring at the end of this month. Rihm Kenworth has restructured its service leadership team by adding two Regional Service Operations Managers in place of a Director of Service. We’d like to express our gratitude to Cal for his time and service at Rihm, and for his 39 years supporting the entire trucking industry. We wish Cal and his wife Barb all the best during their next chapter of life!

## DOUG CONNIFF

Doug, the Rihm Kenworth Branch Service Manager in Winona, has been with Rihm about 2 years. He has 30+ years of service manager and parts sales experience. We are pleased to announce that Doug will now be Rihm’s Regional Service Operation Manager (South) for Rihm Kenworth, while also continuing to serve as Winona’s service manager. Along with Winona, Doug will now also oversee the southern Rihm Kenworth dealership service departments including Albert Lea and Mankato. Congratulations on this promotion, Doug!



## KENNY HUFF

Kenny has been promoted from Rihm Kenworth’s South St. Paul Service Manager to one of two new Regional Service Operations Manager (North) positions. Kenny has been with Rihm for 8 years and has held various roles with Rihm Kenworth. Kenny has more than 12 years of experience in the industry including 4 years at MHC Kenworth, Kansas. Kenny will oversee Rihm Kenworth’s service departments in South St. Paul, Coon Rapids, Sauk Centre and Superior. Congratulations on your promotion, Kenny!



## JORGE DICKINSON

Jorge joined Rihm Kenworth in 2022 as a Service Advisor in South St. Paul and has spent the past 12 years working in various service departments at heavy-duty truck dealerships. We are pleased to also announce that Jorge has been promoted to South St. Paul’s Service Manager-in-Training. Congratulations on your promotion, Jorge!

# BEFORE



# AFTER

**WE HAVE**

**EQUIPMENT**

THAT'S STATE-OF-THE-ART

**EMPLOYEES**

WHO ARE EXPERTS IN THEIR FIELD

**EXPERIENCE**

WITH OVER 250 YEARS COMBINED

**EXCELLENCE**

IN SERVICE & TURNAROUND TIMES

Body Shop | Rihm Kenworth | 9400 Evergreen Blvd, Coon Rapids, MN 55433 | 651.236.6080

# CENTURY OF INNOVATION

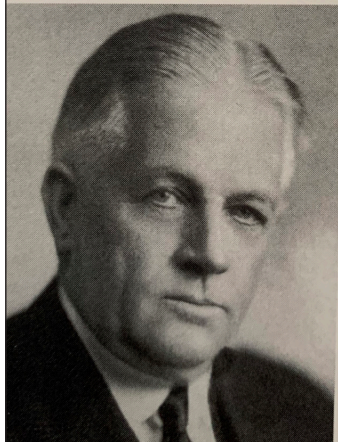
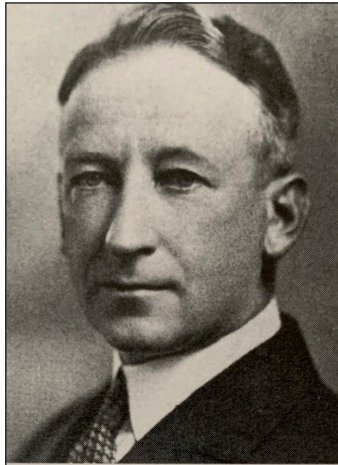
## FROM FOUR-CYLINDER GAS POWERED TRUCKS TO BATTERY ELECTRIC VEHICLES

KIRKLAND, Wash., Feb. 15, 2023 – Throughout the last century, more than 1.3 million trucks have hauled goods across the United States and Canada roadways with the Kenworth badge on the grill. In 2023, Kenworth begins a year-long celebration, commemorating its 100th anniversary and contributions to the transportation industry.

The history of Kenworth began in 1923 when Harry W. Kent and Edgar K. Worthington incorporated the Gersix Motor Company as Kenworth. The company name was formed from a combination of letters from the founders' last names while the world-renown Kenworth "bug" logo originated from the K in Kent and W in Worthington.

That first year, the small Seattle truck manufacturer produced 78 gasoline-powered trucks. Since then, Kenworth has produced more than a million Class 5 to Class 8 models, and super heavy duty trucks, like the C500 6x6 with its gross combination weight rating of 1 million pounds. Kenworth is also now producing medium and heavy duty battery electric vehicles.

"Kenworth's storied history over the past 100 years provides much to be proud about. From being the first U.S. truck manufacturer to offer a diesel engine as standard equipment in 1933 to selling Kenworth trucks with an electric powertrain today, it's been quite a journey," said Kevin Baney, Kenworth general manager and PACCAR vice president. "We're also especially proud of our leadership in



Harry W. Kent (top)  
& Edgar Worthington (bottom)

truck aerodynamics with the Kenworth T600 introduction in 1985. That model began the revolution in fuel-efficient trucks and its evolution has tremendously advanced in the new flagship T680 that sets industry standard today in truck aerodynamics."

Kenworth's success and staying power in a competitive business can be traced back to a philosophy established early in the firm's history. The goal was to build the right Kenworth truck for each customer's application to get the job done and build that truck to last. That philosophy, which continues to be true to this day, resulted in Kenworth establishing a solid reputation for its quality, innovative and durable trucks driven by state-of-the-art technology.

"Kenworth has remained true to its core values since its founding," said Baney. "We've achieved many amazing accomplishments in our first 100 years. But there's more work to be done at Kenworth as we drive the next 100 years and continue our mission of producing The World's Best trucks."

Kenworth Truck Company, founded in 1923, is the manufacturer of The World's Best® heavy and medium duty trucks. Throughout 2023, Kenworth is celebrating its historic 100th anniversary. To learn more about the 100th anniversary celebration visit [www.Kenworth100.com](http://www.Kenworth100.com). Kenworth is a PACCAR company.

*Article written by Jeff Parietti, PACCAR*



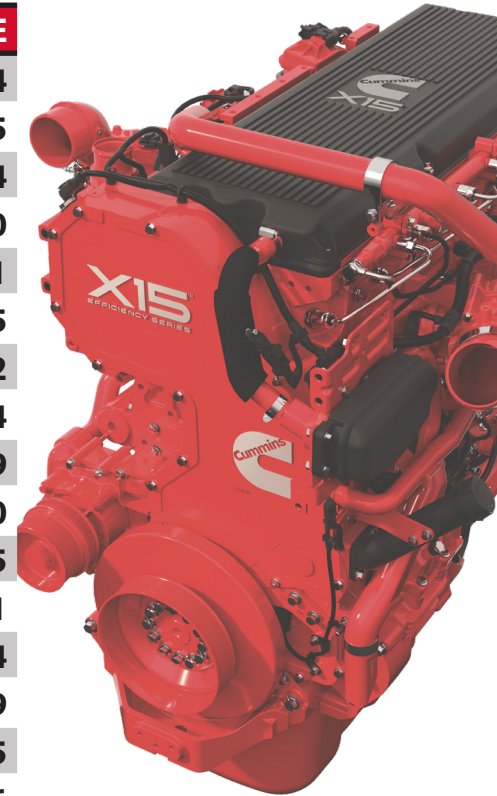
Kenworth plant in 1920s

# AFTERTREATMENT SYSTEMS

Aftertreatment parts & systems from Cummins!

## CUMMINS AFTERTREATMENT PARTS

PART DESCRIPTION	PART #	PRICE
2017 DEF PUMP MAIN FILTER KIT	5579176CUM	\$103.34
DPF ASSEMBLY EPA/GASKET	2871453CUM	\$34.95
DOSER INJECTOR	2888173CUM	\$450.94
AFM DEVICE EPA/GASKET	5417860CUM	\$44.80
DOSER EPA/PUMP	4387304RXCUM	\$1,028.91
COMB BOLT	2885916CUM	\$6.75
V BAND EPA/CLAMP	5272750CUM	\$88.62
PARTICULATE SENSOR	5461550RXCUM	\$434.44
PARTICULATE FILTER KIT	5633757CUM	\$2,651.99
TEMPERATURE SENSOR	4384812CUM	\$278.80
PARTICULATE FILTER EPA/KIT	5579295CUM	\$2,419.15
HEX FLANGE HEAD CAP SCREW	4394383CUM	\$3.91
DOSER PUMP	5506956RXCUM	\$1,112.54
2017 AFTERTREATMENT INJECTOR KIT	5578983CUM	\$784.69
AFM DEVICE EPA/GASKET	5418557CUM	\$45.45
PARTICULATE FILTER EPA/KIT	5579296CUM	\$2,442.16
AFM DEVICE GASKET	4354280CUM	\$41.05
PARTICULATE SENSOR	5461552RXCUM	\$434.44
THERMAL EPA/ISOLATOR	2885889CUM	\$11.16
NITROGEN OXIDE SENSOR	5295473RXCUM	\$554.17
TEMPERATURE SENSOR	4384811CUM	\$202.29
PARTICULATE FILTER EPA/KIT	5579369CUM	\$2,413.28



## RECOMMENDATIONS FOR CLEANING CUMMINS AFTERTREATMENT SYSTEMS

Engines incorporate an ash load monitor that will help a driver determine when it is time to do a DPF cleaning. The driver will be notified by the check engine lamp or amber warning lamp, which will flash for 30 seconds after the key switch on the truck is set to ON. If the aftertreatment DPF has been removed for cleaning and is considered reusable, then the aftertreatment DPF should be returned to the point of purchase to be exchanged. Cummins does not endorse localized air cleaning machines for ash removal. All DPFs requiring ash cleaning should be returned to a Cummins authorized repair location in exchange for a new or recon DPF.

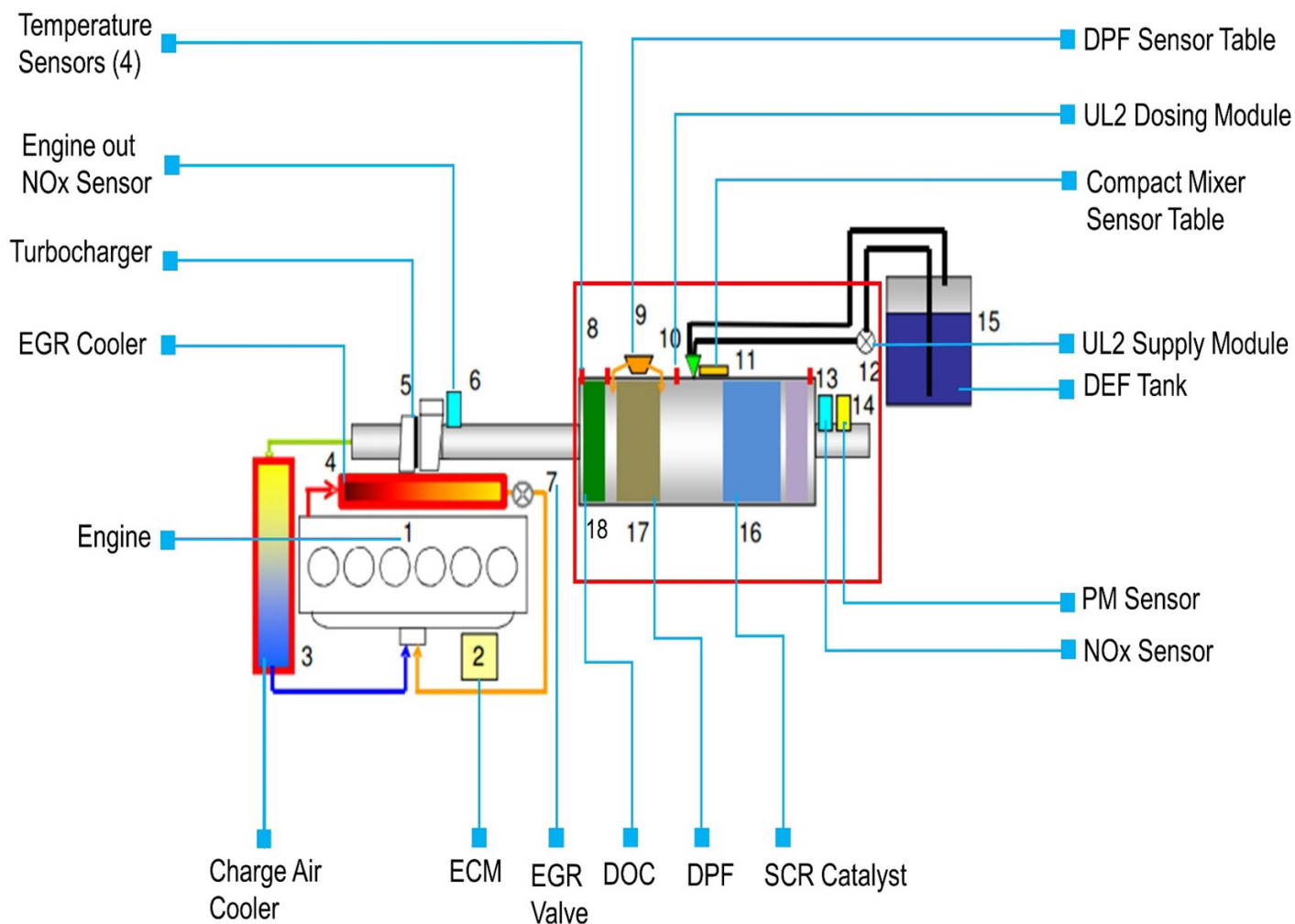


# LEARN MORE ABOUT IT

## Breaking down components of aftertreatment systems

### WHAT IS AN AFTERTREATMENT SYSTEM?

An aftertreatment system is a method or device for reducing harmful exhaust emissions from internal-combustion engines. In other words, it is a device that cleans exhaust gases to ensure the engines meet emission regulations.



1 - Engine

2 - ECM

3 - Charge Air Cooler

4 - EGR Cooler

5 - Turbocharger

6 - Engine Out NOx Sensor

7 - EGR Valve

8 - Temperature Sensors (4)

9 - DPF Sensor Table

10 - UL2 Dosing Module

11 - Compact Mixer Sensor Table

12 - UL2 Supply Module

13 - NOx Sensor

14 - PM Sensor

15 - DEF Tank

16 - SCR Catalyst

17 - DPF

18 - DOC

# ALL OUR BEST SELLERS ON SALE SO YOU CAN GET THEM TOO!

## AIR SPRINGS, DRYERS & COMPRESSORS

## RMC TRUCK PARTS

### SLACK ADJUSTERS

### DUMP PUMPS



AIR DRYER AD-IS

AIR DRYER

801266RMC \$232.24

109685RMC \$153.66



AIR SPRING

A/C COMPRESSOR

1104K002RMC \$39.61

F69-6003-122RMC \$230.85



AUTOMATIC SLACK ADJUSTER

400-10143RMC \$63.79



DUMP PUMP

C102ASRMC \$573.43



AUTOMATIC SLACK ADJUSTER

AS1136RMC \$57.03



DUMP PUMP - C SERIES DIRECT

C102RMC \$489.75

## MISC. PARTS KITS



PRESSURE HOSE KIT

REAR ENGINE MOUNT KIT

S-17199RMC \$504.07

11760RMC \$258.22



AUTOMATIC SLACK ADJUSTER

AS1132RMC \$60.01



DOSER PUMP

4387304RMC \$448.50

## VALVES & SENSORS



SPRING BRAKE CONTROL VALVE

110500RMC \$44.04



PURGE VALVE KIT - HARD SEAT

K022105RMC \$37.50



CONTROL VALVE

800260RMC \$110.32



NITROUS OXIDE (NOX) SENSOR

2894939RMC \$391.47



SURGE TANK

N5346001RMC \$206.34



LARGE MIRROR

M015400RMC \$56.37



CONTROL VALVE - MV3

800516RMC \$92.98



NITROUS OXIDE (NOX) SENSOR

4326874RMC \$336.19



8-HOLE DIRECT MOUNT PTO

489XHAHX-V5XKRMC \$717.63



TORQUE ROD BUSHING

839310RMC \$25.74

## MORE CUSTOMER FAVORITES



**Troy McGrath**  
Parts Counter Representative

## Meet Your Parts Professional

Troy has been a member of the Rihm team for over 6 years now, so many of the regular parts customers at South St. Paul may already know of him. However, for those who don't make it to the South St. Paul dealership often, here is some more information to get to know Troy a little better!

When at work, Troy enjoys being able to work closely every day with the other parts team members. Outside of work, though, you will often find him at the bowling alley or spending time in his family's camper during the spring and summer seasons.

**Main Store Location:** South St. Paul, MN

# PRODUCTS



## EATON & TRP® CLUTCHES

PART DESCRIPTION	PART #	PRICE
CLUTCH EP 15.5,2050 TORQ, VCT DAMPR,7-SPRING	308925-25	<b>\$943.87</b>
CLUTCH - ULTRASHIFT PLUS, 2 IN,14 SPLINE ECA	122002-35A	<b>\$2,039.2</b>
CLUTCH EP 15.5,1860TORQ, VCT DAMPR, 7-SPRING	308925-20	<b>\$887.75</b>
CLUTCH EP 15.5,1700 TORQ, DAMPR, 7-SPRING	308925-82	<b>\$759.96</b>
CLUTCH SELFADJ 15.5,1700 TRQ, DAMP, 7-SPRING	309701-82	<b>\$866.79</b>
CLUTCHSELFADJ 15.5,1860TRQ, VCT DAMP,7-SPRING	309701-20	<b>\$1,028.21</b>
CLUTCH - DM 15-1/2	121000-1	<b>\$1,488.48</b>



**GET ADDITIONAL  
\$30 OFF  
CLUTCHES WITH  
COUPON CODES:**

*Eaton Clutches  
Y234354*

*TRP Clutches  
Y234356*

*\*Additional \$10 off  
available for OPC users*

## TRP® EXHAUST PARTS

PART DESCRIPTION	PART #	PRICE
CLAMP-EXHAUST WB PREFRMD 5" SS	EC50PLS	<b>\$9.94</b>
CLAMP-EXHAUST WB PREFRMD 5" ALMZ	EC50PLA	<b>\$9.68</b>
EXHAUST-FLEX 5"X25' .018" 304SS	EF50300S	<b>\$18.39</b>
CLAMP-MUFFLER BAND ZINC 5IN	EC50UZP	<b>\$5.26</b>
CLAMP-EXHAUST WB PREFRMD 4" SS	EC40PLS	<b>\$9.69</b>
PIPE-EXHAUST FLEX 5"X10' 304SS	EF50100S	<b>\$21.87</b>
CLAMP-EXHAUST WB FLTBND 5" SS POL	EC50ESTB	<b>\$10.72</b>
MUFFLER	EMM10682TRP	<b>\$76.60</b>
CLAMP-EXHAUST CHROME 5IN	EC50UCP	<b>\$12.62</b>
CLAMP-EXHAUST WB PREFRMD 3-1/2 AL	EC35PLA	<b>\$8.85</b>
BELLOW-EXHAUST PACCAR	EBKW11865	<b>\$252.75</b>
PIPE-EXHAUST FLEX 5"X18" 304SS 18G	EF5018S	<b>\$39.42</b>
TUBING-ROUND STL 5"X16GAX10' ALMZ	EF50STA120	<b>\$146.57</b>
CLAMP-EXHAUST WB PREFRMD 4" ALMZ	EC40PLA	<b>\$8.67</b>
PIPE-EXHAUST FLEX 5"X12" 304SS 18G	EF5012S	<b>\$26.29</b>
CLAMP-EXHAUST HD FLTBND 5" ZN	EC50FBZ	<b>\$6.08</b>
PIPE-EXHAUST FLEX 4"X25' 304SS 18G	EF40300SFMH	<b>\$16.15</b>
CLAMP-EXHAUST ZINC 4IN	EC40UZP	<b>\$5.96</b>
PIPE-EXHAUST FLEX 4"X10' 304SS	EF40100S	<b>\$18.34</b>
PIPE-EXHAUST STR 5X36 STL CHR OD/CRVD	EP50CS236C	<b>\$72.10</b>
BELLOW-EXHAUST AM KIT M66-7091-03	EBPB11861	<b>\$257.20</b>
PIPE-EXHAUST FLEX 5"X24" 304SS 18G	EF5024S	<b>\$52.59</b>



EC50PLS



EF502FS



EMM10682TRP

# COUPONS



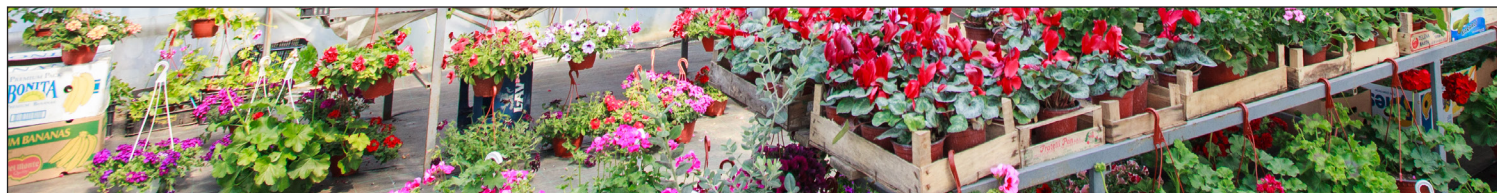
## APRIL MONTHLY SPECIALS

PART DESCRIPTION	COUPON CODE	DISCOUNT
CUMMINS 15L RECON ENGINES	M23APR4584	\$300 OFF
CUMMINS GENUINE TURBO	M23APR4583	\$75 OFF
CUMMINS FUEL PUMPS	M23APR4582	\$40 OFF
CUMMINS CAMSHAFT	M23APR4585	\$40 OFF
CUMMINS ENGINE CONTROL MODULE	M23APR4581	\$35 OFF
CUMMINS GENUINE HD DIESEL PARTICULATE FILTER	M23APR4578	\$25 OFF
CUMMINS GENUINE TURBO ACTUATOR	M23APR4579	\$25 OFF
CUMMINS GENUINE INJECTOR	M23APR4580	\$25 OFF
CUMMINS GENUINE WATER PUMP	M23APR4577	\$10 OFF



# GARDENING TIPS & IDEAS

## SPRING IS HERE, LET'S GET PLANTING!



With spring around the corner, it's hard not to notice the major grocery and home improvement stores are setting up seed stands and garden supplies at their storefronts. Having gardened for the past 18 years, people would think I owned every tool there is possible out there. But I don't. Instead, I have two traditional Hmong gardening hoes and a bow rake. Gardening is not complicated and shouldn't be. However, dedication, patience and a bit of knowledge is a must. So, if you're interested in starting a garden, here are a few tips.

**Choosing your plants** – Pick vegetables and herbs that you and your family enjoy eating. Cilantro, dill, chives, carrots, cucumbers, tomatoes, and lettuce are some of the easiest plants to grow. There are a variety of vegetables and herbs that come back every year.

**Tools** – Gardening hand tools are great to have. Gloves, a garden rake, hoe, hand trowel, water hose, and wheelbarrow go a long way.

**Planting** – If you opted to plant from seeds, invest in seedling cell trays or pods. I've used egg cartons and placed them inside Ziploc bags before and they work just as well. Place your planters in an area with lots of sunlight at room temperature. Once the weather stays consistently warm outside, you can introduce your seedlings outdoors. Monitor them outdoors for 2-3 days,

watch for wilting and weakness. If they're safe and healthy still, then they can be transplanted into the ground. If in doubt, seed packets contain information on zoning areas of when to start planting, how much sunlight is needed, germination, and length of time to maturity.

**Location** – Choose a spot in your backyard that will have a lot of sun. Remove all large rocks, branches, and debris from the area. You'd also want to till the soil at least twice, more if it's grassy or weedy. Tillers can be rented at your local construction equipment retailer.

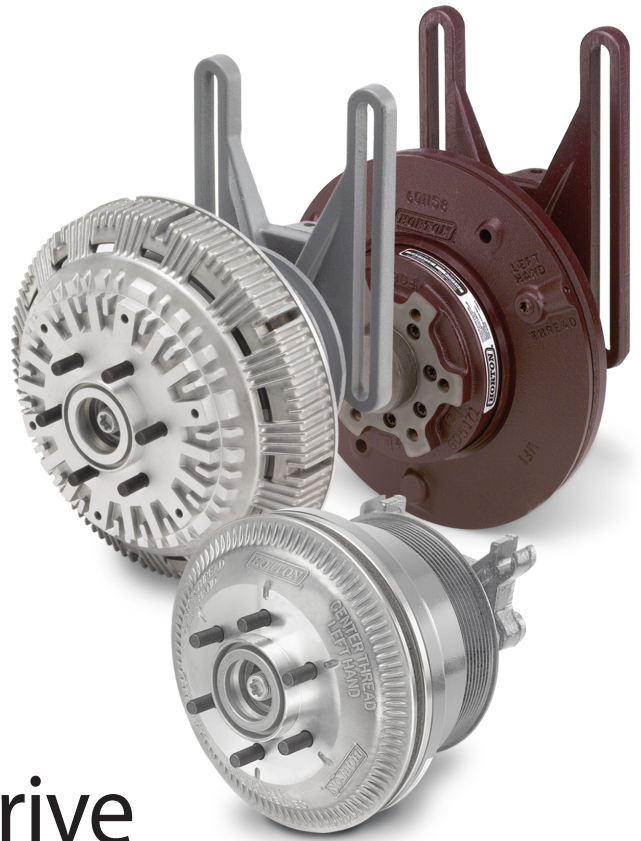
**Map out your garden** – Section your garden. Decide if you want to separate the herbs from the vegetables. Or if you want the shorter plants in the front and the taller plants in the back or to the sides. Visualize your garden in full bloom and use that as a guide. Include clearance areas for foot traffic between your herbs and vegetables.

Remember to water your garden, provide support to your plants as they grow, remove weeds often, and watch your garden grow. Be creative and be patient. You'll be enjoying the fruits of your labor soon and be amazed at what Mother Earth can do.

*Article written by Kachia Thor, Rihm Family Companies*



When your fan drive needs service, replace it with a high-quality DM Advantage<sup>®</sup> or HT/S Advantage<sup>®</sup> remanufactured fan drive



PART DESCRIPTION	PART #	PRICE*
DUAL PILOT K32 REPAIR KIT	9908504	\$349.78
FAN BLADE 813- CW SUCKER, 91.2WD, 127.06I	996813502-002	\$196.67
DM ADVANTAGE ON-OFF - NEW	99A9586H0R	\$1,621.35
DM ADVANTAGE ON-OFF REMAN	79A9586RMAN	\$729.85
HT/S ADVANTAGE SUPER KIT	994305H0R	\$442.36
DM ADVANTAGE SEAL KIT	994346H0R	\$102.75
DM ADVANTAGE ON-OFF REMAN	79A9592RMAN	\$742.93
DM ADVANTAGE ON-OFF REMAN	79A9782RMAN	\$1,068.47
HT/S ADVANTAGE SUPER KIT	995607H0R	\$558.59
FAN BLADE 11	996813501-002	\$200.91
ENGINE FAN HS 11 32" TRIMMED	996813252-001	\$198.74
HT/S ADVANTAGE REMAN	791014RMAN	\$837.57
ROLLER BUSHING KIT (K40J0303A)	994427	\$331.57
DM ON-OFF RAPID REPAIR KIT	FCR5568	\$410.94
KIT-REPAIR DUAL PILOT ON-OFF	1S-DP	\$504.81

\*Core charges apply to all reman parts

## ENVIRONMENTALLY RESPONSIBLE:

Horton has long been an advocate of the environment. In fact, it is proud that the products it manufactures help reduce fuel consumption and noise. Horton is continually improving its products, manufacturing and facilities to remove waste, prevent pollution and protect natural resources.

## BENEFITS OF USING REMANUFACTURED FAN CLUTCHES:\*

- **Maximum uptime and long life**
  - High-quality DRAC bearings
  - Durable design
  - Feature latest technology
  - Proven in millions of OEM miles
  - Long-life friction liner and air cartridge
  - Made in the U.S.A.
- **Easy to install and cost-effective**
  - Exact drop-in replacements
  - Total cost can be less than rebuilding
  - Credit for old Horton or competitive cores
- **Reliable operation**
  - Smooth fan engagements prevent damage to belts and tensioners
  - OEM spec design
  - Same warranty as new
  - Any obsolete or damaged parts always replaced



9908504



1S-DP



DRAC BEARINGS

## REASONS TO USE DRAC BEARINGS:

- Uses Horton's industry-leading, double-row, angular contact (DRAC) bearing for increased durability and product life
- Over 3x the bearing life vs. competition during hot-box durability test
- 55% more rolling elements per row
- Highest-rated load capacity
- High-heat resistant grease and Viton seal

# HUB CAPS

## \$22.33 each

- Free Heat Check Bolt in every box (alerts users if the hub has ever gotten above 250 degrees)
- Spokes to protect the lens
- Flange is nearly twice as thick
- The gasket surface is ground to ensure no leak paths
- Made of Polished Aluminum

**BOLTS, GASKETS & SIDE FIL INCLUDED**



**NO WINDOW KIT  
= 1 LESS LEAK PATH**

PART DESCRIPTION	REV HD	STEMCO #
HUB CAP, OIL	RHO-S01	4024
HUB CAP, OIL	RHO-T03	4009
HUB CAP, OIL	RHO-T04	4195
HUB CAP, GREASE	RHG-T03	NEW!
HUB CAP, GREASE	RHG-T04	NEW!

# REV MAX WHEEL SEALS

## \$30.73 each



PART DESCRIPTION	REV HD #	STEMCO #
REV MAX WHEEL SEAL	RM-S01	383-0136
REV MAX WHEEL SEAL	RM-D02	393-0173
REV MAX WHEEL SEAL	RM-T03	373-0143
REV MAX WHEEL SEAL	RM-T04	373-0123
REV MAX WHEEL SEAL	RM-S05	383-0164
REV MAX WHEEL SEAL	RM-T09	373-0113

# SPINDLE LOCKING NUTS (AND REPLACEMENT RETAINING CLIPS)



PART DESCRIPTION	LOCKING NUT #	REPLACEMENT RETAINING CLIP #
Steer FF Universal Spindle Locking Nut (448-4836, AX 12-1500, 614836)	RL-S01	RC-S01
Steer FE Universal Spindle Locking Nut (448-4837, AX 18-1500, 614837)	RL-S02	RC-S02
Drive R Universal Spindle Locking Nut (449-4973, AX 12-3250, 614973)	RL-D02	RC-D02
Trailer TN Universal Spindle Locking Nut (447-4743, AX 16-2625, 614743)	RL-T03	RC-T03
Trailer TP Universal Spindle Locking Nut (447-4723, AX 12-3480, 614723)	RL-T04	RC-T04



# TOP QUALITY PARTS

Special pricing on parts from top brands!

## JW SPEAKER LIGHTING

PART DESCRIPTION	PART #	PRICE
HEADLIGHT-HEATED 8800 EV2 4X6 LED LB CHR	0551771JWS	\$168.19
HEADLIGHT-HEATED 8800 EV2 4X6 LED HB CHR	0551781JWS	\$168.19
HEADLIGHT-HEATED 8800 EV2 4X6 LED LB BLK	0552651JWS	\$168.20
HEADLIGHT-HEATED 8800 EV2 4X6 LED HB BLK	0552671JWS	\$168.20
8910 DOT/ECE RHT HTD CRM	0554461JWS	\$219.92
HEADLIGHT-8800 EV2 4X6 LED LB CHROME	0551371JWS	\$162.73
WIRE ASSEMBLY, W/3-PIN CONNECTOR	3270501JWS	\$5.26



### J.W. SPEAKER'S MODEL 8800 EVO 2

NHTSA 5-STAR RATED FOR SAFETY & PERFORMANCE!



**J.W. SPEAKER**  
Engineered. Lighting. Solutions.

## BRAKE DRUMS

PART DESCRIPTION	PART #	PRICE
DURABRAKE CAST BRAKE DRUM BALANCED	16792X	\$129.99
DRUM BRAKE	DB1657B	\$134.99
TRP STEEL JACKET DRUM 16.5"X7"-23K	DB123537	\$204.00



DB1657B

DB123537

## GUNITE SLACK ADJUSTERS

PART DESCRIPTION	PART #	PRICE
SLACK ADJUSTER KIT	AS1132	\$73.42
SLACK ADJUSTER KIT	AS1136	\$73.42
SLACK ADJUSTER KIT	AS1140	\$73.42
SLACK ADJUSTER KIT	AS1141	\$73.42



AS1132



# CLEARANCE CORNER

Save on parts with these great clearance deals!

**LIMITED QUANTITIES AVAILABLE OF ALL CLEARANCE ITEMS**

PART DESCRIPTION	PART #	QUANTITY AVAILABLE	PRICE
12.50" EXHAUST BELLOW	M66-3541RMC	5	\$208.20
GLASS TINTED WINDOW SLEEPER - 5 PACK LH	R44-1065-5	4	\$411.08
EXHAUST BELLOW KIT	M66-7091-0320KITRMC	4	\$280.89
GLASS REAR WINDOW CENTER GREEN TINT	R44-6028-5	4	\$254.96
PEDAL SET RAISED DIAMOND CUT KW LOGO, 14+	RWP235-7-KW	4	\$234.10
PIN ASSY-SPIDER	K125329NBXW	2	\$324.82
NITROGEN OXIDE (NOX) SENSOR	22303390RMC	2	\$314.52
GUSSET-AG2 SUSPENSION	K140-2468	2	\$273.37
PEDAL SET BLACK POWDER COAT KW LOGO, 94-06	RWP235-5BP-KW	2	\$269.51
PEDAL SET RAISED DIAMOND CUT KW LOGO 94-06	RWP235-5-KW	2	\$238.25
BATTERY-AGM GRP 31 925CCA FAHRENHEIT	BAF31S91EXCH	2	\$234.88
ALTERNATOR-22SI 150AMPS J180 HINGE 12V	19020310	2	\$223.23
EGR VALVE KIT	4955422RXCUM	1	\$1,053.04
BODY JUNCTION HARNESS	P92-1922-06000	1	\$899.33
GEAR COVER KIT	4089996	1	\$499.83
DOOR-SLEEPER TOOL COMPARTMENT LH	T25-1051-001	1	\$488.86
SIDE EXTENDER RH DEFLECTOR	T33-1000-013R	1	\$415.37
STEERING GEAR	DTAS65218	1	\$383.52
MTG KIT	XG-13KP	1	\$330.00
EXHAUST PIPE MBEND 5" STL LH CHR OD/ID	K180-14764CP	1	\$315.76
PEDAL SET BLK POWDER COAT PB LOGO, 94+	RWP235-4BP-P	1	\$242.56
GLASS-WINDOW DOOR DROP GREEN TINT 5 PACK	R44-1068-5	1	\$176.00
30" HIGH OUTPUT LED LIGHT BAR SINGLE ROW/ DRIVING BEAM / REFRACTIVE LENS, 21 LED	HD30121DBW	1	\$167.59

Please contact your Rihm parts sales representative, or visit your local Rihm Kenworth parts counter for more information and to see the current product availability.



RWP235-5BP-KW



RWP235-5-KW

# CLOSEOUT SALE

Discounted pricing on RMC branded air dryers!

## RMC AIR DRYERS



PART DESCRIPTION	PART #	PRICE
AIR DRYER ASSEMBLY (AD-IS) 12V	801266RMC	\$232.24
AIR DRYER ASSEMBLY (AD-9) 12V	065225RMC	\$153.66
AIR DRYER CARTRIDGE (AD-9)	107794RMC	\$31.68
AIR DRYER ASSEMBLY (AD-9) 12V	109685RMC	\$153.66



107794RMC



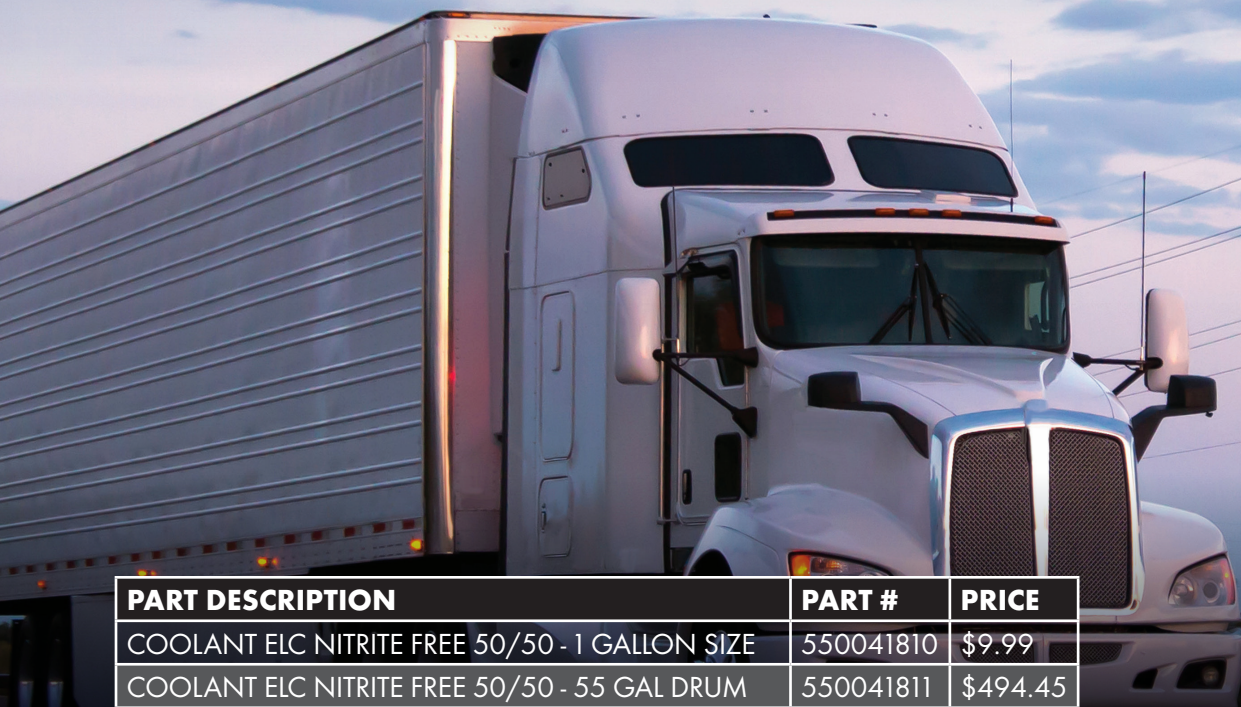
801266RMC



109685RMC

## COMPLETE PROTECTION FOR YOUR HEAVY-DUTY ENGINE

The Shell family of heavy-duty motor oils and coolants are formulated to provide high-performance protection for today's heavy-duty diesel and natural gas engines.



PART DESCRIPTION	PART #	PRICE
COOLANT ELC NITRITE FREE 50/50 - 1 GALLON SIZE	550041810	\$9.99
COOLANT ELC NITRITE FREE 50/50 - 55 GAL DRUM	550041811	\$494.45

\*Requires full use of Shell Rotella® ELC Nitrite-Free 50/50 Coolant in the system and proper maintenance. Proper maintenance as detailed at shell.us/coolants. Follow OEM recommendations for specified maintenance.

# BUMPERS & FILTERS

Quality parts for the inside & outside of your truck!

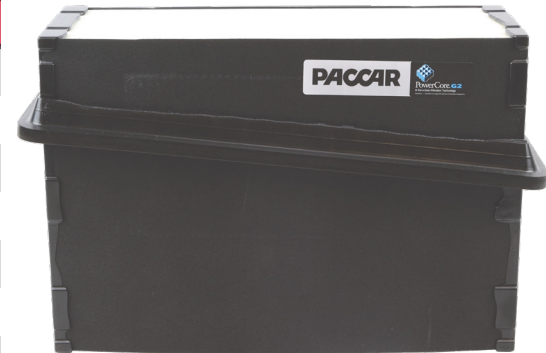
## ROADWORKS BUMPERS

PART DESCRIPTION	PART #	PRICE
7GA HD CHROME MULTI-FIT 18" BLIND MOUNT BOX END BUMPER	B070001-18BX	\$1,458.00
7GA HD CHROME MULTI-FIT 20" BLIND MOUNT BOX END BUMPER	B070001-20BX	\$1,498.00
7GA HD CHROME PB 389 18" STANDARD MOUNT BOX END BUMPER WITH TOW HOLE	B073210-18BX	\$1,198.00
7GA HD CHROME KW W900L 18" STANDARD MOUNT BOX END BUMPER WITH TOW HOLE	B074050-18BX	\$1,198.00
7GA HD CHROME PB 379 18" STANDARD MOUNT BOX END BUMPER WITH TOW HOLE	B073130-18BX	\$1,198.00



## AIR & CABIN FILTERS

PART DESCRIPTION	PART #	PRICE
PACCAR AIR ELEMENT	P621725	\$120.23
PACCAR AIR ELEMENT	P621730	\$122.96
AIR FILTER, EXTENDED LIFE, LONG	P640017	\$183.99
AIR FILTER, EXTENDED LIFE, SHORT	P640016	\$183.98
AIR FILTER	RS2863JAB	PRICE VARIES*
AIR FILTER	PA2705JAB	PRICE VARIES*
AIR FILTER ELEMENT	RS4989JAB	PRICE VARIES*
AIR FILTER ELEMENT	RS3518JAB	PRICE VARIES*
CABIN AIR FILTER	PA30269JAB	PRICE VARIES*
AIR FILTER ELEMENT	RS3534JAB	PRICE VARIES*
CABIN AIR FILTER	PA4857JAB	PRICE VARIES*
AIR FILTER	RS5287XPJAB	PRICE VARIES*
AIR FILTER	PA5584JAB	PRICE VARIES*
AIR FILTER	PA32000JAB	PRICE VARIES*
AIR FILTER ELEMENT	RS3539JAB	PRICE VARIES*
AIR FILTER PANEL	AF55839FLG	PRICE VARIES*
AIR FILTER	AF4878FLG	PRICE VARIES*
AIR FILTER	AF1968FLG	PRICE VARIES*
AIR FILTER	AF26235FLG	PRICE VARIES*



ASK YOUR  
RIHM KENWORTH  
PARTS SALES  
REPRESENTATIVE  
FOR A CUSTOM  
QUOTE

*\*Prices will vary depending on rebate program details*

# KENWORTH COMPLETE BATTERY & TOOL BOXES

Carry additional equipment. Lower center of gravity!



# RoadWorks®

## ADVANCED CAB ENTRY BOXES

AVAILABLE IN THREE SIZES | 34" | 40" | 45"

**One piece direct bolt on replacement for factory box assemblies**

- Maximizes use of space by lowering bottom deck to match lower step
- Locking "T" handle latch on BOTH battery and tool boxes
- OE look and feel with RoadWorks style and quality
- No Closing Studs
- No Wing Nuts

**Custom Options Available:**  
Custom lengths available to customer specs  
Added lighting  
Tread designs  
Logos

**LIMITED LIFETIME  
WARRANTY**

ROADWORKSMFG.COM



@ROADWORKSMFG

800.448.8741



# IT'S TIME...

TO MAKE A CHANGE -  
TRADE IN YOUR OLD EQUIPMENT  
& BUY A 2018 OR NEWER TRUCK

**Fast & secure online  
credit application!**

**Scan the QR Code to complete it now!**



2019 Kenworth T680 76" sleepers



2019 Kenworth T680 52" sleepers



**12 SPEED  
AUTO  
TRANS.**

# WE FINANCE TRUCKS

## FIRST TIME BUYERS WELCOME!

*Contact your local Rihm Kenworth Dealership  
or Truck Sales Representative for more details  
or to place an offer on a truck today!*

## PICK & CHOOSE!

### Between 7 units ALL priced at \$79,900

Finance for under \$2,000 a month with \$0 down\*

\*dependent on approved credit

2019 Freightliner Cascadia Condos



# AVAILABLE TO RENT

BRAND NEW  
2024 T680's

## NEXT GEN SLEEPERS



- AERODYNAMIC STYLING
- HIGH VISIBILITY LED SIDE TURN INDICATORS
- NEW INTERIOR STYLING
- 15" CUSTOMIZABLE DIGITAL DISPLAY
- STATE-OF-THE-ART TECHNOLOGIES
- BEST-IN-CLASS HEADLAMPS

Partner with **experts** who are focused on your needs today and tomorrow.



LEASE, RENTAL & MAINTENANCE

TIM CARROLL

507.456.4344

[tim.carroll@rihmfamilycompanies.com](mailto:tim.carroll@rihmfamilycompanies.com)

MINNESOTA - WISCONSIN - SOUTH DAKOTA



**RIHM LEASING**



# KENWORTH 100 YEARS

## KW W900 LIMITED EDITION RECOGNIZES INDUSTRY'S ESTEEMED CLASSIC MODEL

KIRKLAND, Wash., Feb. 15, 2023 – Kenworth is celebrating its centennial throughout 2023. To commemorate this major historic milestone, today Kenworth introduced its 100th anniversary Kenworth W900 Limited Edition.

“The Kenworth W900 is an all-time classic and iconic truck in the industry that is still admired on the road and at truck shows,” said Jim Walenczak, Kenworth assistant general manager for sales and marketing. “As a long-time staple of Kenworth’s history, there is no better way to kick off our year-long 100th anniversary celebration than by launching this Kenworth W900 Limited Edition.”



The special model is available in three configurations – 86-inch Studio Sleeper, 72-inch Flat Top and Extended Day Cab. The all-black Limited Edition Diamond VIT has 100th anniversary. Other interior features include a special edition steering wheel, brushed platinum dash and door trim, and Kenworth 100 logos throughout on the doors and thresholds. A Kenworth 100 sofa bed is standard with the 86-inch Studio Sleeper.

Exterior elements include Kenworth 100 sleeper badges. A Kenworth 100 exhaust shield cutout and sun visor are optional. A special optional centennial 3-color paint design brings a classic, impactful look to the W900, and is only available with the 86-inch Studio Sleeper and 72-inch Flat Top.

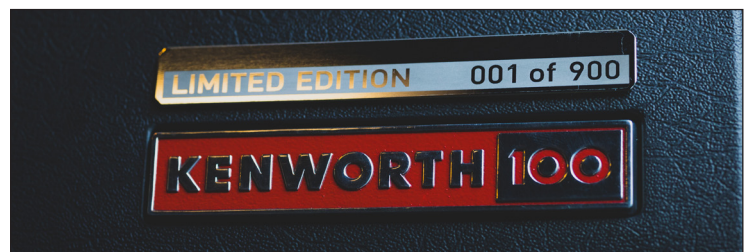


Kenworth is also introducing four signature paint colors available on new Kenworth Class 8 and medium duty trucks. The new colors are Century Platinum, Century Black Red, Century Red and Century Gold.

“The W900 is a special truck and this Limited Edition is a great way to celebrate 100 years of Kenworth,” said Walenczak. “Only 900 of these trucks will be produced, so they will definitely become a showcase vehicle for owners who want a piece of Kenworth history.”

Each Kenworth W900 Limited Edition will be serialized – for example, 001 through 900 – in order of build date and sequence with a special Limited Edition badge on the glovebox. The units are limited to 2023 production which began this week.

To learn more about all the available specifications included in the Kenworth W900 Limited Edition, please contact your local Rihm Kenworth truck sales representative.



# KENWORTH 100 YEARS

## KW T680 SIGNATURE EDITION CELEBRATES COMPANY'S 100<sup>TH</sup> ANNIVERSARY



KIRKLAND, Wash., Feb. 15, 2023 – Kenworth today introduced the T680 Signature Edition as part of the Kenworth 100th anniversary celebration during 2023.

The new offering is available with Kenworth's 76-inch mid- and high-roof sleeper configurations. The Signature Edition Diamond VIT features a black interior with legacy red stitching accents throughout the cab and sleeper. The package also includes a Kenworth 100 branded GT703 seat with red accents special brushed platinum dash and door trim, and Kenworth 100 logo stitched into the sleeper back wall.

The Kenworth T680 Signature Edition exterior features a black onyx grille and side air intake, and prominent Kenworth 100 badges on the sleeper. An optional Kenworth 100 exhaust shield cutout and black anodized grille mesh are also available on mid-roof configurations. Also optional are new Alcoa stylized wheels with unique spoke patterns in Dura-Bright® and Dura-Black™ finishes.

Kenworth is also introducing four signature paint colors available on new Kenworth Class 8 and medium duty trucks. The new colors are Century Platinum, Century Black Red, Century Red and Century Gold.

"Today's T680 is our most aerodynamic and fuel-efficient truck to date and carries on the legacy of the Kenworth T600 – the industry's first truly aerodynamic model

introduced in 1985. This Kenworth T680 Signature Edition is an excellent choice for both owner operators and for fleets seeking an outstanding reward truck for its top drivers," said Jim Walenczak, Kenworth assistant general manager for sales and marketing.

The Kenworth T680 Signature Edition is available to order now, but the production of the special edition is limited to Kenworth's 2023 100th anniversary year only.

**Contact your local Rihm Kenworth truck sales representative for more details or to place an order.**



# HONORING THE WORLD'S BEST

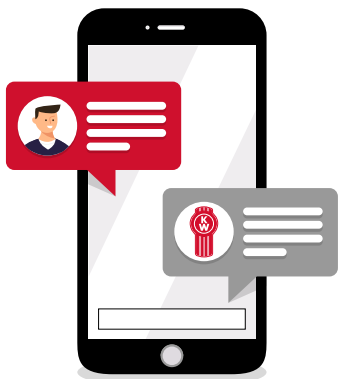
Every year Kenworth invites a select amount of the top ranking Kenworth truck sales representatives throughout the United States to attend an exclusive trip. This year Kenworth is bringing the top 50 truck sales representatives to the Nassau Bahamas to celebrate another successful year!

Here at Rihm, we are grateful to have such a strong and successful truck sales team that many of our truck sales members have qualified for this trip multiple times throughout their time with Rihm. This year, however, we congratulate both Colby Smith (*pictured on the right*) and Dean Dills (*pictured on the left*) on qualifying for this fun vacation this year!

As Dean and Colby pack up their bags with sunscreen and sandals for the beach, they also want all other Rihm Team members to know that they couldn't do it with out them.

***"We sell the trucks, but we have SO many people that help us in the background that make us look good. That really is what keeps us at the top. We couldn't get where we are without the 'Rihm Team' backing us in the service dept, body shop, parts, and many other departments. It sounds cheesy but it's true."***

***-Colby Smith***



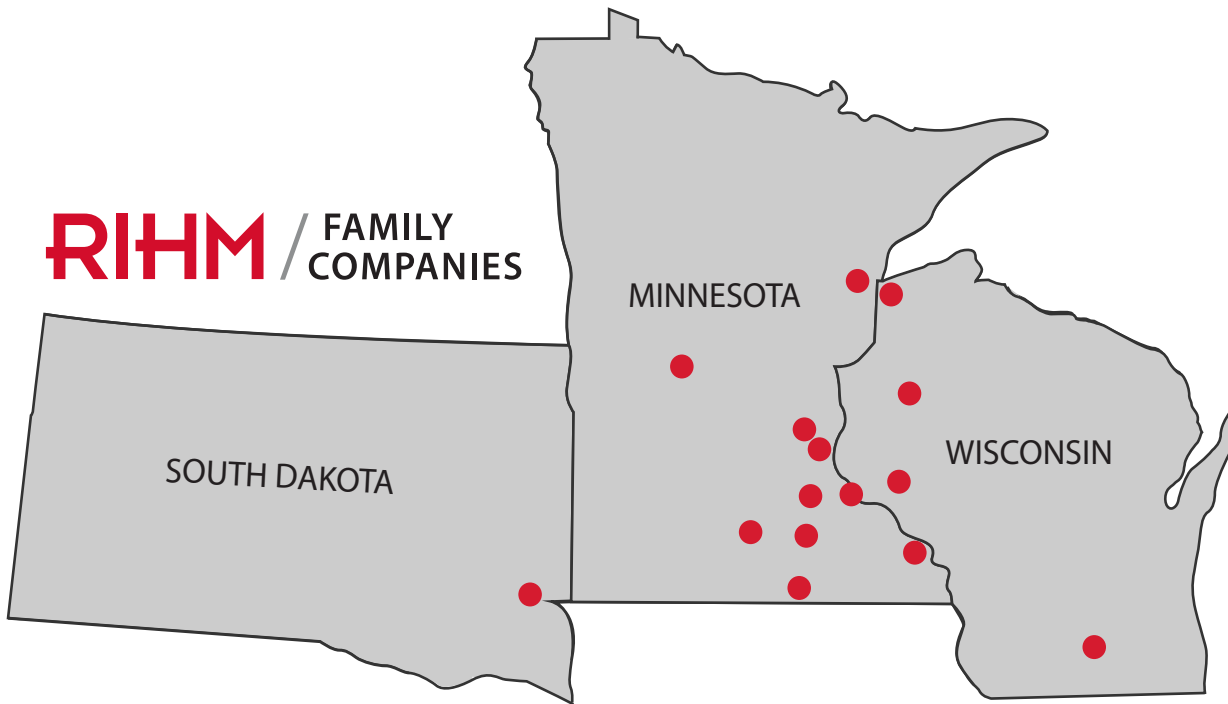
## DID YOU KNOW?

You can text your local Rihm Kenworth dealership location's phone number to place a parts order. We even accept texted images of the needed part!

# CONTACTS & LOCATIONS

MULTIPLE LOCATIONS - FOR YOUR CONVENIENCE

**RIHM** / FAMILY COMPANIES



MINNESOTA	WISCONSIN	SOUTH DAKOTA	
<p><b>Albert Lea</b> 77847 209th St Albert Lea, MN 56007 507.552.1340</p>	<p><b>Owatonna</b> 3205 Hoffman Dr NW Owatonna, MN 55060 507.451.2990</p>	<p><b>Barron</b> 1504 Guy Ave Barron, WI 54812 715.637.1301</p>	<p><b>Sioux Falls</b> 4001 North Jessica Ave Sioux Falls, SD 57104 605.339.2927</p>
<p><b>Cloquet</b> 801 Industry Ave Cloquet, MN 55720 218.879.2473</p>	<p><b>Red Wing</b> 860 Bench St Red Wing, MN 55066 651.388.7067</p>	<p><b>Durand</b> 904 West Prospect St Durand, WI 54736 715.279.3210</p>	
<p><b>Coon Rapids</b> 9400 Evergreen Blvd Coon Rapids, MN 55433 651.236.6080</p>	<p><b>Sauk Centre</b> 805 Shamrock Ln Sauk Centre, MN 56378 320.352.8540</p>	<p><b>Madison</b> 6025 Femrite Dr, Unit #1 Madison, WI 53718 608.224.0133</p>	
<p><b>Mankato</b> 2401 9th Ave Mankato, MN 56001 507.550.3800</p>	<p><b>South St. Paul</b> 425 Concord St South South St. Paul, MN 55075 651.646.7833</p>	<p><b>Superior</b> 4501 Tower Ave Superior, WI 54880 715.395.5350</p>	
<p><b>Northfield</b> 1720 Cannon Rd Northfield, MN 55057 507.645.1657</p>	<p><b>Winona</b> 6830 Martina Rd Minnesota City, MN 55959 507.452.4400</p>		