

# RIHM MONTHLY

Driver Appreciation & Comfort | September 2023



**TECH TALK:** Driver Comfort for the Long-haul



MINNESOTA | WISCONSIN | SOUTH DAKOTA

RIHMFAMILYCOMPANIES.COM 800.988.8235

# THE INSIDE LOOK

## DRIVING FOR THE LONG-HAUL GET TO KNOW RIHM'S LONGEST TENURED DRIVERS

*We are grateful for the many miles driven each year by all our Rihm Kenworth and Rihm Leasing casual drivers. So for truck driver appreciation week this year we decided to ask two of Rihm Kenworth's most tenured drivers some questions to get to know them more.*



**Jeff**

### WHEN DID YOU FIRST START DRIVING HEAVY DUTY TRUCKS?

I had a fascination with big trucks at an early age and began driving farm trucks as a teenager. Then I received my first CDL in the mid 70's to drive a logging truck in northern Minnesota, but I let it expire when I married and began a career as a structural engineer designing bridges, dams and flood control projects. In 2000 I acquired my Class A CDL again and began driving part-time for a dairy, and then in 2001 for Rihm Kenworth, delivering new and used trucks.

### WHAT GOT YOU TO EVENTUALLY DECIDE TO GO BACK INTO TRUCKING?

My early interest in big machines such as trucks, tractors and earth moving equipment never waned. Even though I had a 40 year career as a structural engineer, the tug was strong to get back to driving the trucks for which I was designing bridges. It started part-time intermittently, and now since I have retired 3 years ago, it is nearly a full time adventure.

### WHAT IS YOUR FAVORITE THING ABOUT DRIVING A TRUCK LONG DISTANCES?

It is an opportunity for adventure by getting away to see the country from a "corner office" with a panoramic view, often in a brand new Kenworth. There are a lot of great photo opportunities, many

include the truck I am driving in a unique setting, of which Megan of Rihm often posts on our social media sites.

### IS THERE A DRIVING ROUTE IN THE USA THAT IS YOUR FAVORITE TO TAKE?

Any route through the Rocky Mountains or Appalachians or across the wide open spaces of the open plains. Even an occasional run through Chicago or New York can be an adrenaline rush.

### WHAT IS YOUR FAVORITE KENWORTH TRUCK MODEL?

The old school style of the W900 will always be a favorite, but when it comes to quiet, comfort and easy driving, the new T680 Next Gen trucks are great.

### HOW DO YOU KEEP YOURSELF ENTERTAINED ON THE ROAD?

Listening to podcasts and audio books and catching up on the phone headset with friends and relatives keeps me up-to-date, but just the quiet purr of a diesel engine in a new Kenworth, while also viewing all of the beautiful scenery our great country has to offer, is often all it takes to entertain me.



**Dick**

### WHEN DID YOU FIRST START DRIVING OR WORKING WITH TRUCKS?

I started driving in 1963 for Century Motor Freight, I initially worked the docks backing trailers up and I got my chauffeur's license (CDL wasn't a thing) while working there. My dad was a driver for Century Motor Freight and on his last run before retiring, Century had me go with him, but had me drive. That was my first time driving a route.

### IS THERE A DRIVING ROUTE IN THE USA THAT IS YOUR FAVORITE?

I drove a truck from Renton Washington to California and the route through the mountains and the coastal areas was incredible.

### WHAT IS YOUR FAVORITE KENWORTH TRUCK MODEL AND YEAR?

I love driving T880's, they feel like a *real* truck to me.

### WHAT IS SOMETHING YOU'RE PROUD OF FROM YOUR CAREER AS A TRUCK DRIVER?

My first driving route was in 1964 and at that time I had an opportunity to enter a truck rodeo competition at the state level and I won it in the straight truck division. There were 7 categories in the truck driving competitions and I was determined to win each one and eventually to earn a national title. In 1965 I won the national competition in Kansas City. These competitions fueled my passion for trucking. I ended up competing in 13 truck driving national competitions throughout my career, winning first in every category they had. My last National Championship win was in 1991 in Minneapolis. That was the last category I needed to complete my goal of winning in every division.

### HOW DO YOU KEEP YOURSELF ENTERTAINED ON THE ROAD?

I love to listen to Country Western Music on the radio. The trucks I drive must have a working radio in them!

# TABLE OF CONTENTS

## FEATURES

- The Inside Look - Driving for the Long-haul **1**
- 2022 MTA Driver of the Year **4**
- Service Discount Coupons **6**
- #ThankATrucker Trivia **21**

## CONTRIBUTIONS

- Body Shop - Finding the Right Collision Facility **3**
- Tech Talk **5-6**
- Parts Specials **7-20**
- Full Service Leasing - Keeping Your Drivers Happy **22**
- Find Used Trucks for Sale **23-24**
- Finance **25**

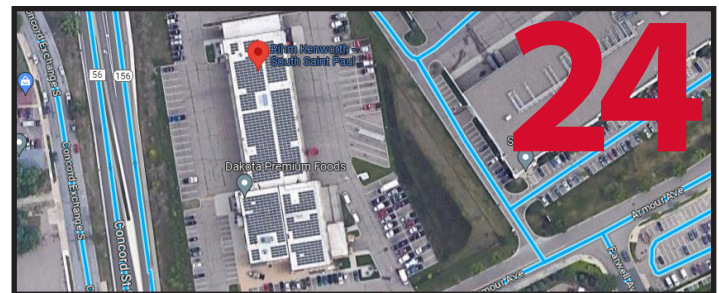
## RECOGNIZED DAYS THIS MONTH

- Blood Cancer Awareness Month
- Self-Care Awareness Month
- Pain Awareness Month
- National Spinal Cord Injury Awareness Month
- National Food Bank Day: **9/1**
- Labor Day: **9/4**
- International Day of Charity: **9/5**
- International Literacy Day: **9/8**
- Truck Driver Appreciation Week: **9/10-16**
- National Suicide Prevention Week: **9/10-16**
- National Celiac Disease Awareness Day: **9/13**
- World Lymphoma Awareness Day: **9/15**
- Hispanic Heritage Month: **9/15-10/15**
- International Week of the Deaf: **9/17-23**
- International Day of Peace : **9/21**
- World Alzheimer's Day: **9/21**
- Zero Emissions Day: **9/21**
- National Drive Electric Week: **9/22-10/1**
- National Public Lands Day: **9/23**
- World Cancer Research Day: **9/24**
- World Environmental Health Day: **9/26**
- World Heart Day: **9/29**

Rihm Monthly Magazine Archives

2023

**16**



All prices & products listed in this booklet are only available while supplies last, and may only be redeemed for products or services purchased between **September 1, 2023 - September 30, 2023**. No substitutions or rain checks will be allowed. Coupons cannot be redeemed for a cash value. Discounts, prices and/or coupons cannot be applied to previous purchases, or towards any product purchases made outside the designated dates. Online Parts Counter coupons are only redeemable online & will not be recognized for in-store purchases.

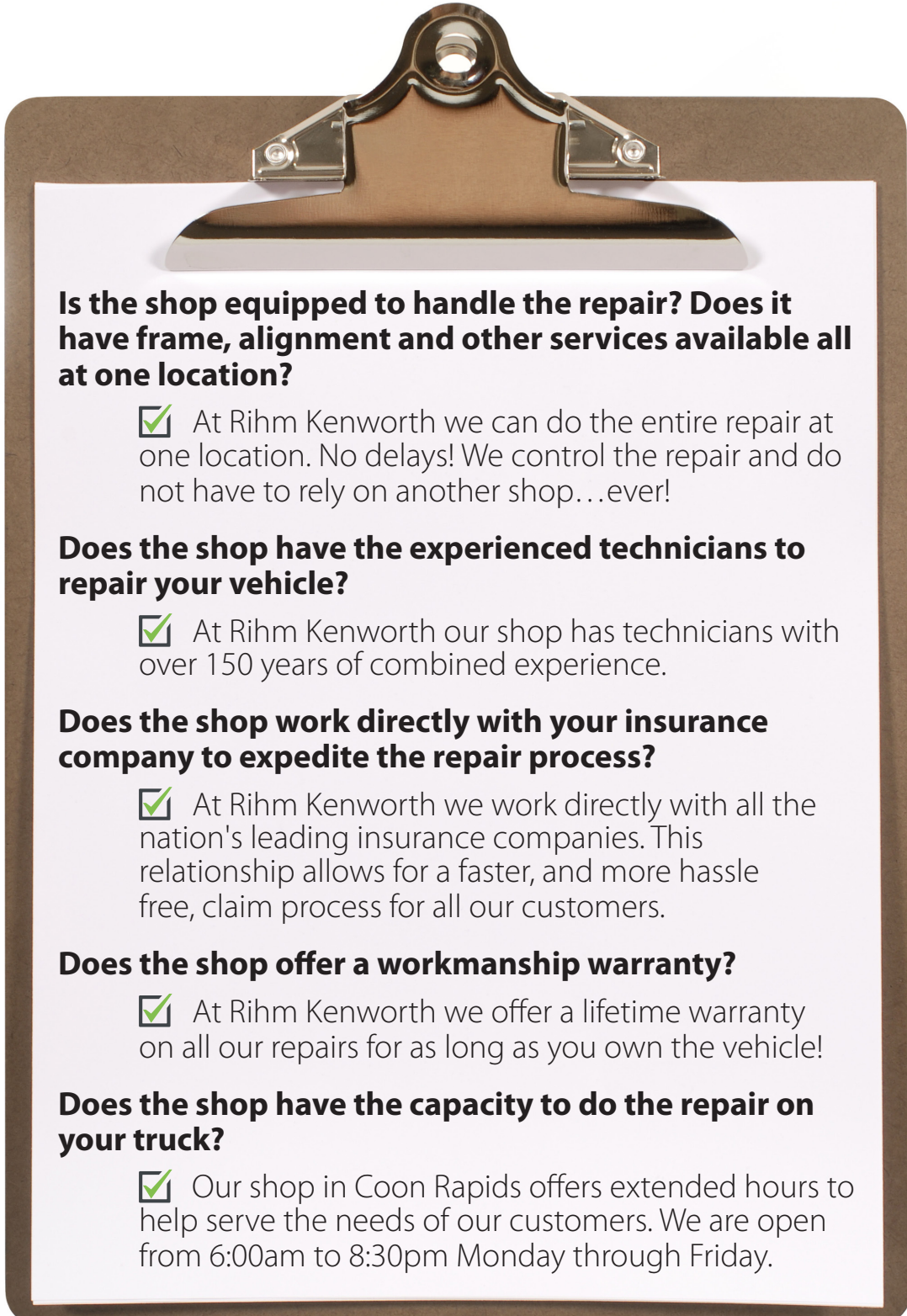
# FINDING THE RIGHT COMMERCIAL COLLISION REPAIR FACILITY

## QUESTIONS TO CONSIDER WHILE CHOOSING WHERE TO TAKE YOUR TRUCKS TO BE REPAIRED AFTER AN ACCIDENT HAPPENS

So you had an accident... once everything is settled at the accident site, then the next step is to choose where you would like to bring your commercial vehicle to be repaired. There are many factors to consider when making this decision. Here are some of the main questions we recommend asking while you decide. We have also provided explanations of how the Rihm Kenworth Body Shop in Coon Rapids holds up to each one.

**Visit today to see for yourself how our body shop checks all the boxes!**

9400 Evergreen Blvd  
Coon Rapids, MN 55433  
P: 651.236.6080



### **Is the shop equipped to handle the repair? Does it have frame, alignment and other services available all at one location?**

At Rihm Kenworth we can do the entire repair at one location. No delays! We control the repair and do not have to rely on another shop...ever!

### **Does the shop have the experienced technicians to repair your vehicle?**

At Rihm Kenworth our shop has technicians with over 150 years of combined experience.

### **Does the shop work directly with your insurance company to expedite the repair process?**

At Rihm Kenworth we work directly with all the nation's leading insurance companies. This relationship allows for a faster, and more hassle free, claim process for all our customers.

### **Does the shop offer a workmanship warranty?**

At Rihm Kenworth we offer a lifetime warranty on all our repairs for as long as you own the vehicle!

### **Does the shop have the capacity to do the repair on your truck?**

Our shop in Coon Rapids offers extended hours to help serve the needs of our customers. We are open from 6:00am to 8:30pm Monday through Friday.



# 2022 MTA DRIVER OF THE YEAR

Written by Minnesota Trucking Association Staff

The Minnesota Trucking Association (MTA) named Scott Swenson, professional truck driver for Dart Transit Company, headquartered in Eagan, MN, the 2022 Minnesota Driver of the Year at its Driver of the Year Award Ceremony [back in January of this year].

"This award is a great way to honor the best in our industry. Driving safely is no easy task, especially when you take into consideration his daily driving conditions like congestion, driver distractions, and the added challenges of Minnesota winters. Having over 4 million safe driving miles is an outstanding accomplishment," says John Hausladen, MTA president. "We're proud to award Scott for this achievement."

Scott's history with Dart began in 1967 when he was only 9 years old, tagging along with his dad to the Dart office on weekends. When he turned 18 he got his Class A driving permit and with all his experience backing and spotting trailers, he aced his behind-the-wheel test. Scott then began delivering short haul loads in Minnesota to gain experience, and once he turned 21 he expanded to delivering loads in the upper Midwest.

Scott also made the very first customer delivery with Dart's 53' prototype trailer. That delivery was important because it helped prove that 53' trailers were safe and practical out on America's highways. In the years since, Scott has been a highly reliable dedicated fleet driver with more than 4 million accident-free driving miles.

"If Dart Transit had a professional sports team, Scott would be our franchise player," said Randy Luckow, Safety Director at Dart Transit Company. "He is unmatched for his loyalty, dependability, and safety. He is a modest team player who does everything without a complaint."

Scott's runs are dedicated to Andersen Windows, with loads varying from shuttle runs to delivering windows to contractors throughout Minnesota and Wisconsin.

When he is not busy being a great example of what it means to be an outstanding professional truck driver, Scott enjoys doing yard work, helping friends and family with projects, four-wheeling, and hunting.

Throughout 2022, exceptional drivers were nominated by their companies and one driver is chosen each month to be the Driver of the Month. The drivers who are chosen meet a high standard of requirements including an outstanding driving and work record; contribution to industry and highway safety; and involvement in the community. One of the twelve nominees is then selected as Driver of the Year by a panel of judges including Matthew Marin, Division Administrator for Federal Motor Carrier Safety Administration, Laura Roads, MnDOT and Captain Jon Olsen, Minnesota State Patrol.

*This article was original featured in the February edition of Trucking Minnesota, and was provided to be featured in the Rihm Monthly for Truck Driver Appreciation week.*



# TECH TALK

## DRIVER COMFORT FOR THE LONG-HAUL



Center gauges and buttons in the Kenworth Special Edition W990L

The trucking industry has always been the backbone of economies worldwide, ensuring the smooth and timely delivery of goods across vast distances. However, the life of a truck driver has historically been associated with long hours, tight schedules, and challenging working conditions. Fortunately, in recent times, a paradigm shift has occurred, with a growing focus on enhancing the well-being of these dedicated professionals. With innovations in technology and design, new truck driver comforts are transforming the industry, improving the quality of life for these essential road warriors.

### Ergonomically Designed Cabins

One of the most notable advancements in the trucking industry is the integration of ergonomically designed cabins. Traditionally, truck cabs lacked attention to driver comfort, leading to fatigue and discomfort during long journeys. However, today's truck manufacturers have recognized the importance of ergonomic design. Modern cabins now feature adjustable seats with lumbar support and improved suspension systems to minimize the impact of rough roads. Ergonomic placement of controls and instruments reduces strain on the driver, allowing for a more relaxed and comfortable driving experience.

### Advanced Climate Control Systems

For truck drivers who navigate diverse climates, the introduction of advanced climate control systems has been a game-changer. These systems enable drivers to maintain a comfortable interior temperature regardless of external weather conditions. Trucks are now equipped with efficient heating, ventilation, and air conditioning (HVAC) systems, providing relief from extreme temperatures. Automated climate control also ensures that drivers can focus on the road without worrying about adjusting temperature settings frequently.

### Info-tainment and Connectivity

Long hours on the road can lead to feelings of isolation and monotony for truck drivers. To combat this, manufacturers have implemented cutting-edge infotainment systems in modern truck cabins. These systems offer a wide array of entertainment options, such as satellite radio, music streaming, audio books, and access to popular apps. Moreover, the integration of hands-free communication and voice recognition features enables drivers to stay connected with family, friends, and fellow drivers, promoting a sense of community and reducing the feeling of isolation during extended journeys.

## Smart Sleep Solutions

Ensuring adequate rest is essential for truck drivers to maintain alertness and safety. To address the challenges of obtaining quality sleep while on the road, innovative sleep solutions have been introduced. Truck manufacturers have incorporated built-in sleeper berths with memory foam mattresses, providing a comfortable and supportive sleeping space. Additionally, soundproofing materials and blackout curtains help minimize external disturbances and light, contributing to better sleep quality.

## Enhanced Safety Features

Truck driver comfort is intrinsically linked to safety on the road. With advancements in technology, trucks are now equipped with enhanced safety features, reducing the stress and risks associated with long-haul journeys. Adaptive cruise control, lane departure warning systems, collision avoidance technology, and blind-spot monitoring are just a few examples of safety innovations integrated into modern trucks. These features not only protect the driver but also instill confidence during challenging driving conditions.

The trucking industry's commitment to enhancing truck driver comfort marks a significant shift in the way these essential professionals are perceived and supported. Gone are the days of uncomfortable cabins and grueling journeys. With ergonomically designed cabins, advanced climate control, infotainment and connectivity options, smart sleep solutions, and improved safety features, the road ahead looks brighter for truck drivers. As manufacturers continue to prioritize driver well-being, we can expect even more innovations that will further elevate the level of comfort and safety for those who brave the open road to keep economies thriving. With these new truck driver comforts, the trucking industry is proving that a happier and healthier workforce leads to more productive and efficient journeys for everyone involved.



Interior seat & sleeper in the Kenworth Special Edition W990L



Author: Jorge Dickinson  
Service Manager, South St. Paul

# SERVICE DISCOUNT COUPONS

SERVICE REPAIR DESCRIPTION	COUPON CODE	DISCOUNT**
MOBILE SERVICE INSPECTION AND PART INSTALLATION	N23JULSEP5102	\$50 OFF
COOLING SYSTEM SERVICE	N23JULSEP5090	\$30 OFF
MOBILE COOLING SYSTEM SERVICE	N23JULSEP5091	\$30 OFF
CHARGE/START SYSTEM INSPECTION & MAINTENANCE	N23JULSEP5092	\$25 OFF
MOBILE CHARGE/START SYSTEM INSPECTION & MAINTENANCE	N23JULSEP5093	\$25 OFF
MOBILE DOT / CVI INSPECTION	N23JULSEP5103	\$25 OFF
BRAKE SYSTEM INSPECTION	N23JULSEP5094	\$20 OFF
MOBILE BRAKE SYSTEM INSPECTION	N23JULSEP5096	\$20 OFF
CLUTCH ADJUSTMENT SERVICE	N23JULSEP5097	\$15 OFF
DOT / CVI INSPECTION	N23JULSEP5098	\$15 OFF
AIR FILTER / INTAKE PIPING SYSTEM INSPECTION	N23JULSEP5099	\$15 OFF
MOBILE AIR FILTER / INTAKE PIPING SYSTEM INSPECTION	N23JULSEP5100	\$15 OFF
TRIAGE AND TRUCK SYSTEMS DIAGNOSTICS	N23JULSEP5101	\$12 OFF

\*Limit of 1 redemption per a mobile service call out and/or customer invoice.

\*\*Completed service checklist required to redeem. Service & price may vary by location, ask your local Rihm Kenworth dealership for full offer details. Not redeemable at Rihm Leasing locations. Most offers cannot be combined with other general service offers.

# AIR SYSTEMS PARTS

Take a breath of air, we have the parts you need!

## AIR SPRINGS & MORE



PART DESCRIPTION	PART #	PRICE
SAMPA AIR SPRING - PETERBILT 0308716	SP-558864-KP	\$87.04
SAMPA AIR SPRING - HENDRICKSON S20900/S21800	SP-558709-KP	\$87.50
SAMPA AIR SPRING - PETERBILT, HENDRICKSON TRAILER	SP-559069-KP	\$83.28
SAMPA AIR SPRING - KENWORTH K303-22	SP-559622-KP	\$67.58
SAMPA AIR SPRING - KENWORTH C81-1003, PETERBILT C81-6000	SP-558813-KP	\$79.44
SAMPA AIR SPRING - KENWORTH C81-1004	SP-559547-KP	\$78.29
5TH WHEEL KIT (HOLLAND) LEFT RELEASE	096*555	\$529.30
SAMPA AIR SPRING - NEWAY 90557332/90557369	SP-559974-KA	\$113.57
SAMPA AIR SPRING - KENWORTH K303-14S/K303-15S/K303-6S	SP-559422-KP	\$72.05
SAMPA AIR SPRING - KENWORTH C81-1005	SP-559541-KP	\$75.55
SAMPA AIR SPRING - KENWORTH K303-16	SP-559616-KP	\$73.07
SAMPA AIR SPRING - HENDRICKSON S28929	SP-559978-KP	\$85.42
SAMPA AIR SPRING - FREIGHTLINER 1613810000S/1613840000S	SP-559780-KP	\$85.02
TOP PLATE 50K LBS VERTICAL LOAD (JOST)	SP-C7-V-001	\$953.88

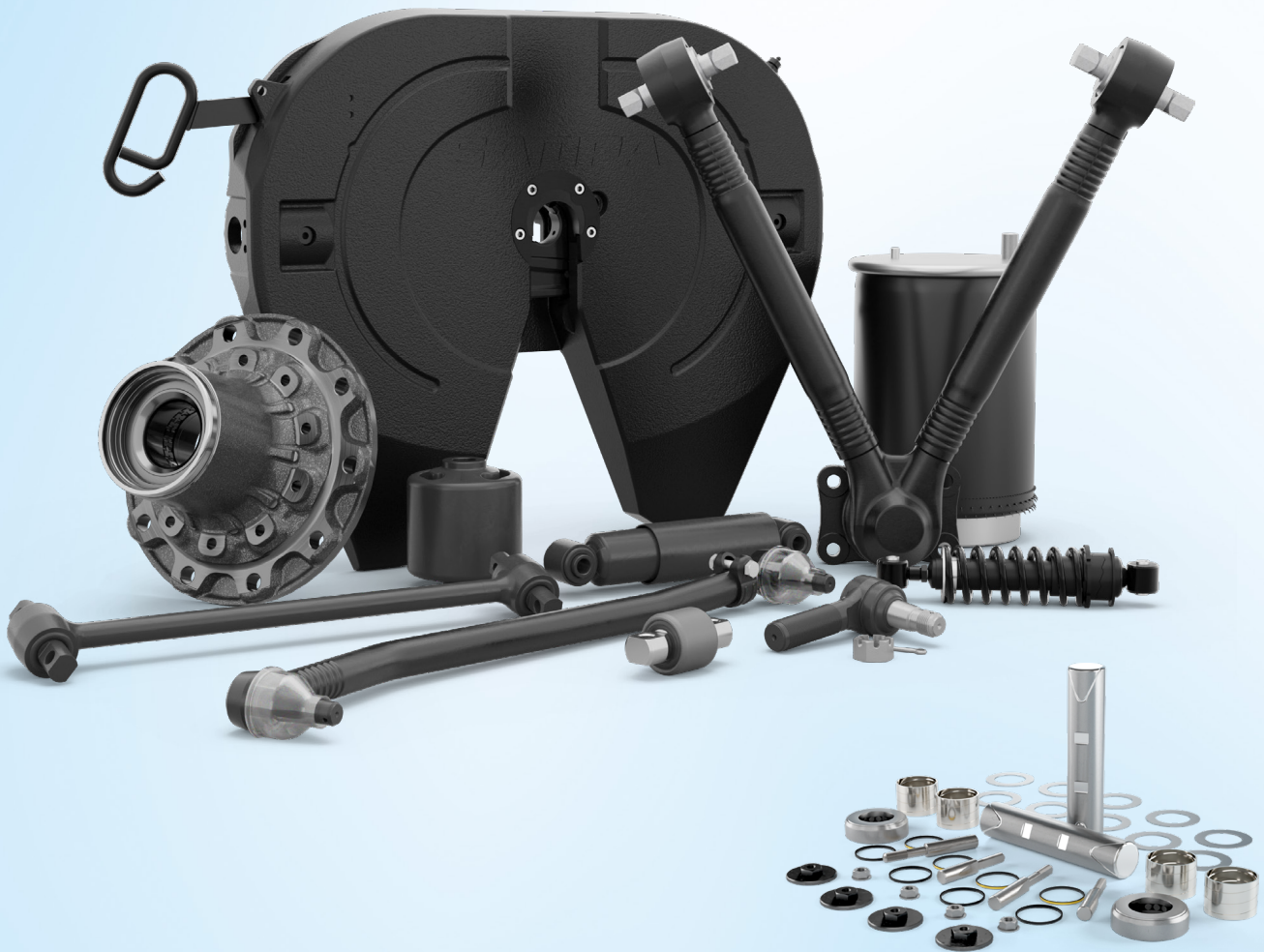
## AIR SYSTEM PARTS FROM HALDEX

PART DESCRIPTION	PART #	PRICE
CHAMBER-BRAKE 2.25"WELD CLEV 3"STROKE	GC3030LCW	\$109.18
ADJUSTER-BRAKE KW, 10 SPL, 5.5"	40010155M1D	\$125.08
VALVE-HEIGHT CONTROL WITH DUMP	HV9990	\$77.28
CLAMP-HOSE	11549	\$3.75
CHAMBER-BRAKE 2.25" WELD CLEV 2.5"STROKE	GC3030CW	\$96.21
SEAL-GLADHAND	10024M1D	\$2.83
CHAMBER-BRAKE T20	SC20	\$45.23
ADJUSTER-SLACK	40020231M1D	\$127.66
SPRING-HOSE *20*	11602M1D	\$6.08
PIN-CLEVIS	CP1M1D	\$2.79
SPRING-HOSE	11603M1D	\$8.45
KIT-SLACK ADJUSTER SABA	40020238M1D	\$127.66
SLACK ADJUSTER	40020228M1D	\$127.66
ADJUSTER-BRAKE 10 SPL, 5.5" DRIVE	40010143M1D	\$125.08
ADJUSTER-BRAKE 10 SPL, 1.25, 5.5", STEER	40010013M1D	\$123.48
VALVE ASSY-HEIGHT CONTROL	HV54007	\$56.95
CLAMP-HOSE	11548M1D	\$3.65
BRAKE CLUTCH	BK313	\$27.43
ADJUSTER-BRAKE SABA TRAILER, 28 SPL, 5.5	40020211M1D	\$121.48
CLEVIS FORGED PIN 5/8	CF2M1D	\$5.84
BRAKE-SPRING 2430 COMBO	GC2430L	\$102.92
BRAKE-SPRING 3036 COMBO WELDED CLEVIS	GC3036CW	\$167.53





# Sampa USA Dream Team!



We only sell what we make in our 14 plants, using the most advanced engineering, technology and quality controls. We offer complete programs for all US truck and trailer applications, consistently delivering excellence and reliability – as demanded by our OEM customers around the globe. All products shipped from one of our 4 distribution centers strategically located in Frisco, TX; Romeoville, IL; Buford, GA and Eastville, CA.



# CUMMINS DIRECT PARTS

Deals on great products from a brand you trust!

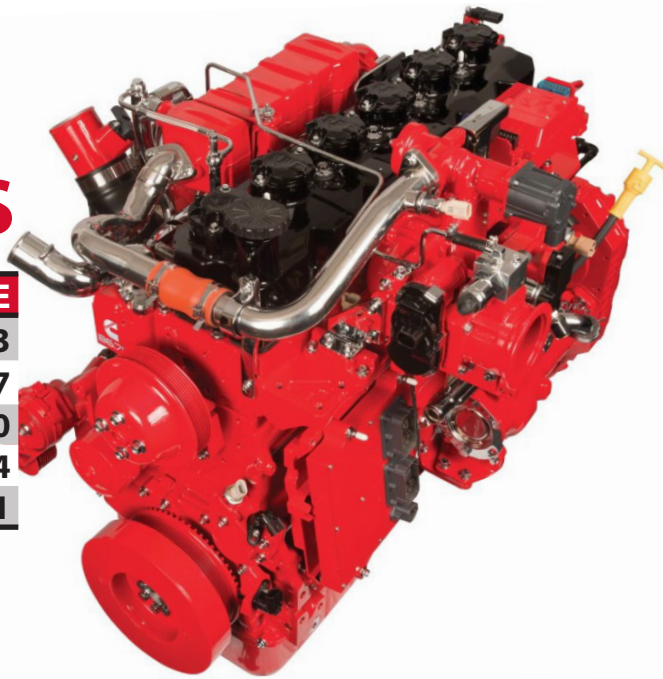
## O-RING SEALS & SCREWS

PART DESCRIPTION	PART #	PRICE
O-RING SEAL	3058653	\$1.60
FRACTURE RESISTANT SCREW	4923187	\$12.67
HEX FLANGE HEAD CAP SCREW	3043647	\$12.69
O-RING SEAL	3070136	\$3.76
O-RING SEAL	3070137	\$3.76
O-RING SEAL	3070138	\$3.80
HEXAGON FLANGE NUT	3056158	\$6.19
O-RING SEAL	3909397	\$1.69
HEX FLANGE HEAD CAP SCREW	3678506	\$20.44



## GASKETS & SPARK PLUGS

PART DESCRIPTION	PART #	PRICE
ENG BRAKE HOUSING GASKET	4920093	\$20.13
EXHAUST MANIFOLD GASKET	3328948	\$6.27
SPARK PLUG KIT	5473009	\$40.50
ROCKER LEVER COVER GASKET	3066311	\$28.14
SPARK PLUG KIT	5633754	\$46.11



## MORE FROM CUMMINS

PART DESCRIPTION	PART #	PRICE
CONNECTOR N-14 PASS THRU	3824010	\$27.81
CONNECTOR ELC REPAIR	5394261	\$37.85
PISTON COOLING NOZZLE	4058947	\$10.34
NOISE ISOLATOR	3899798	\$8.15
HEXAGON FLANGE NUT	3056158	\$6.19
LEAK TEST DYE ADDITIVE	3376891	\$24.43



# REV HD PRODUCTS

Seal & lock it tight with parts from RevHD!

## PREMIUM SEALS



**\$30.73 each**

PART DESCRIPTION	PART #
PREMIUM DRIVE SEAL	RM-D02
PREMIUM TRAILER SEAL TAPERED SPINDLE	RM-T03
PREMIUM STEER SEAL	RM-S01
PREMIUM TRAILER SEAL STRAIGHT SPINDLE	RM-T04
PREMIUM STEER SEAL	RM-S05
PREMIUM DRIVE SEAL	RM-D06



## SPINDLE LOCKING NUTS

**\$39.97 each**

PART DESCRIPTION	PART #
TRAILER TN UNIVERSAL SPINDLE LOCKING NUT	RL-T03
DRIVE R UNIVERSAL SPINDLE LOCKING NUT	RL-D02



## HUBCAPS

PART DESCRIPTION	PART #	PRICE
OIL HUB CAP, TN TRAILER, 6 BOLT WITH SIDE PLUG, GASKET, BOLTS & TEMPBOLT	RH0-T03	\$22.33
OIL HUB CAP, FF STEER, 6 BOLT WITH SIDE PLUG, GASKET, BOLTS & TEMPBOLT	RH0-S01	\$22.33
OIL HUB CAP, TP TRAILER, 6 BOLT WITH SIDE PLUG, GASKET, BOLTS & TEMPBOLT	RH0-T04	\$22.33
OIL PSI HUB CAP, TN TRAILER, 6 BOLT WITH SIDE PLUG, GASKET, BOLTS & TEMPBOLT	RH0-T03PS1	\$27.93

# MORE PARTS



## TRP® WIPER BLADES

PART DESCRIPTION	PART #	PRICE
18" TRP WINTER WIPER BLADE	WW18-10	\$9.19
15" TRP CONVENTIONAL SADDLE METAL WIPER	WCS15-10	\$4.62
15" TRP WINTER WIPER BLADE	WW15-10	\$7.95
22" TRP CONVENTIONAL METAL WIPER BLADE	WC22-10	\$5.84
13" TRP CONVENTIONAL METAL WIPER BLADE	WC13-10	\$5.30
13" TRP WINTER WIPER BLADE	WW13-10	\$7.95
16" TRP WINTER WIPER BLADE	WW16-10	\$8.69
18" TRP CONVENTIONAL METAL WIPER BLADE	WC18-10	\$6.03
24" TRP CONVENTIONAL METAL WIPER BLADE	WC24-10	\$5.84
16" TRP CONVENTIONAL METAL WIPER BLADE	WC16-10	\$5.30
18" TRP CONVENTIONAL SADDLE METAL WIPER	WCS18-10	\$4.82



## TRP® AIR BAGS

PART DESCRIPTION	PART #	PRICE
AIR SPRING, PETERBILT	AS90690	\$138.37
AIR SPRING, TIMPTE TRAILER	AS99740	\$185.00
AIR SPRING, HENDRICKSON TRAILER	AS87090	\$150.45
AIR SPRING, HENDRICKSON TRUCK	AS92970	\$159.57
AIR SPRING	AS88640	\$200.77
AIR SPRING, HENDRICKSON TRAILER	AS80910	\$173.49
AIR SPRING, KENWORTH AG100	AS94220	\$105.88
AIR SPRING, ALUMINUM BASE	AS9780A	\$141.42
AIR SPRING, HENDRICKSON	AS99780	\$164.28
AIR SPRING	AS10673	\$151.18
AIR SPRING, WATSON AND CHALIN	AS68970	\$124.97
AIR SPRING, HENDRICKSON AUXILIARY	AS80500	\$164.00
AIR SPRING	AS96221	\$123.89
AIR SPRING, KENWORTH WITH BRACKET	AS96750	\$154.04



# CATERPILLAR PARTS

Brand name products, read to be put to work!

## FILTER ACCESSORIES & MORE PARTS

PART DESCRIPTION	PART #	PRICE
FILTER ASSY FUEL	1R0749	\$23.53
LOCK NUT	2N2766	\$5.92
LUBE FILTER ASSEMBLY	1R1808	\$35.15
STUD TAPER	1061792	\$12.29
STUD	1163715	\$12.06
LOCKNUT	3E8017	\$5.42
FILTER ASSY	1R0716	\$28.15
HARD WASHER	6V5839	\$0.43
SPACER	4P4369	\$12.95
FILTER ASSEMBLY SEPERATOR	2568753	\$27.46
SLEEVE ASSEMBLY	2401614	\$7.74
SLEEVE ASSEMBLY	2818261	\$27.30
BOLT	9L8925	\$0.22
LOCKNUT	1687800	\$2.51
SPACER	1083612	\$20.50
BOLT, 12PT	1241855	\$17.61
BOLT	5B0841	\$1.94
WASHER	2S5658	\$0.73
HEX BOLT	2421811	\$12.05



## DID YOU KNOW?

The Rihm Monthly has been around for exactly two years now, which means there are quite a few past editions that you can catch up on! You can now re-read any of the past editions of the magazine published in 2022 and 2023 online! Just scan the QR code or visit the URL below to find them all.

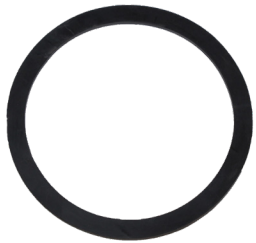


[rihmkenworth.com/magazinearchives](http://rihmkenworth.com/magazinearchives)



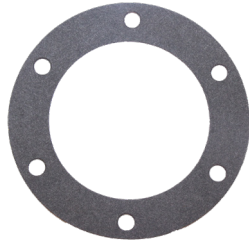
# HEAVY DUTY TRUCK PARTS

## MISC. GASKETS



FUEL TANK CAP GASKET

90-00334RMC \$4.87



HUBCAP GASKET

330-3024RMC \$2.46

## AUTOMATIC SLACK ADJUSTERS

## BRAKE PARTS

## MISC. PARTS



AUTOMATIC SLACK ADJUSTER 5.5", GUNITE STYLE

AS1132RMC \$61.83



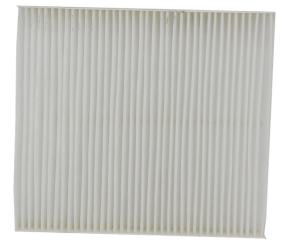
AUTOMATIC SLACK ADJUSTER 6", GUNITE STYLE

AS1141RMC \$58.75



AIR SPRING STUD

27-01746RMC \$5.79



CABIN AIR FILTER

SR2000092RMC \$15.81



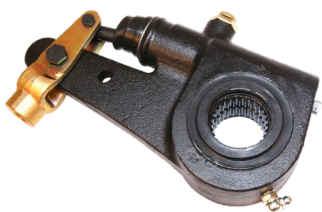
SPRING BRAKE, TYPE 30

3030-TSRMC \$50.22



SURGE TANK

N5346001RMC \$212.53



SLACK ADJUSTER, AUTOMATIC, 5.5", MERITOR STYLE

R801073RMC \$66.19



SLACK ADJUSTER, AUTOMATIC, 5.5" - 6.5", HALDEX STYLE

400-10143RMC \$65.71



AIR DRYER ASSEMBLY (AD-IS) 12V

801266RMC \$232.26



SHOCK ABSORBER

646155RMC \$70.47

# Meet Your Parts Professional

Matt has been with Rihm for 9 years, and during that time he has come to enjoy building his relationships with the customers he meets. He also likes to collaborate with each customer to find successful solutions to any problems they may be experiencing with their equipment. Outside of work, Matt makes it his personal goal to get out on the golf course as many times as he can in a season! Besides golfing, he also enjoys spending his time with family and friends and building model cars and planes.

When Matt was asked about a favorite trip he has taken, he responded, "I took a road trip with my gal and my brother from Duluth to Phoenix, AZ to see some friends and family. While on the road, we stopped at all of the fun spots along the way like the Grand Canyon, Monument Valley, and the Rocky Mountains.



**Matt Pease**  
**Outside Part Sales**  
**Representative**

Main Store Location:  
 Superior, WI

## HOSES, TUBING & STRAPS



HEATER HOSE, 25'

HE3755RMC \$98.08



CHARGE AIR COOLER HOSE, HOT AIR RETURN, 4"

1673-866-CRMC \$30.31



HEATER HOSE, 25'

HE3950RMC \$122.50



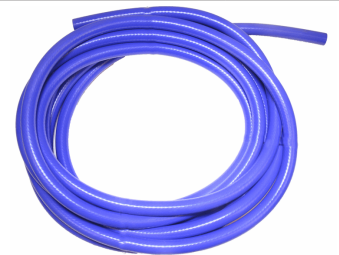
STRAP KIT, CONTAINS GENUINE BOLTS & STRAPS

6\*5-70-18XRMC \$9.25



5/8 HEATER HOSE 25' ROLL

HE3625RMC \$83.64



HEATER HOSE, 25'

HE2932RMC \$59.98



S-CAM TUBING KIT

E11897RMC \$29.19



3 IN 1 AIR/ELECTRIC HOSE KIT - 15'

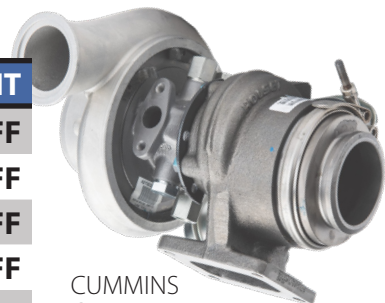
BE27157RMC \$167.92

# DISCOUNTS

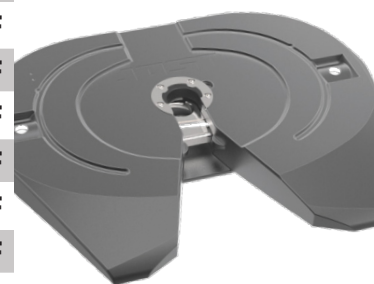


## SEPTEMBER MONTHLY SPECIALS

PART DESCRIPTION	COUPON CODE	DISCOUNT
EATON FULLER REMAN TRANSMISSIONS	M23AUGSEP5079	<b>\$250 OFF</b>
DANA CORE FREE CARRIERS	M23SEP5308	<b>\$150 OFF</b>
SEATS INC. PINNACLE SEATS	M23SEP5338	<b>\$100 OFF</b>
CUMMINS GENUINE CYLINDER HEADS	M23SEP5173	<b>\$75 OFF</b>
CUMMINS GENUINE TURBOS	M23SEP5176	<b>\$75 OFF</b>
CUMMINS GENUINE DOCS	M23SEP5172	<b>\$65 OFF</b>
SEATS INC. LEGACY SEATS	M23SEP4761	<b>\$50 OFF</b>
SAF HOLLAND FIFTH WHEEL 1 PART ONLY XA351A-L-P	M23SEP5333	<b>\$50 OFF</b>
CUMMINS GENUINE EGR COOLERS	M23SEP5171	<b>\$40 OFF</b>
PACCAR GENUINE EXHAUST BELLOWS	M23SEP5230	<b>\$40 OFF</b>
JOST TOP PLATES	M23SEP5310	<b>\$40 OFF</b>
PACCAR GENUINE TORQUE RODS	M23SEP5231	<b>\$35 OFF</b>
TRP® MUDFLAP HANGERS	M23SEP5162	<b>\$30 OFF</b>
TRP® RADIATORS AND CHARGE AIR COOLERS	M23SEP5339	<b>\$30 OFF</b>
CUMMINS GENUINE AIR COMPRESSORS	M23SEP5169	<b>\$25 OFF</b>
TRP® ALUMINUM WHEELS	M23JULDEC5300	<b>\$25 OFF</b>
BENDIX AD-IS AIR DRYER 1 PART ONLY 801266BXW	M23SEP5314	<b>\$20 OFF</b>
TRP® FAN CLUTCH REPAIR KITS	M23SEP5372	<b>\$20 OFF</b>
PACCAR GENUINE LUBRICANT 80W140 & 75W90FE PAILS	M23SEP4784	<b>\$15 OFF</b>
CUMMINS GENUINE DEF DOSER PUMP	M23SEP5168	<b>\$15 OFF</b>
STEER KING BY ATRO	M23SEP5229	<b>\$12 OFF</b>
HENDRICKSON AIR SPRINGS	M23SEP5158	<b>\$10 OFF</b>
CUMMINS GENUINE NOX SENSORS	M23SEP5167	<b>\$10 OFF</b>
HALDEX SLACK ADJUSTERS	M23SEP5335	<b>\$10 OFF</b>
HALDEX BRAKE CHAMBER	M23SEP5336	<b>\$10 OFF</b>



CUMMINS GENUINE TURBOS



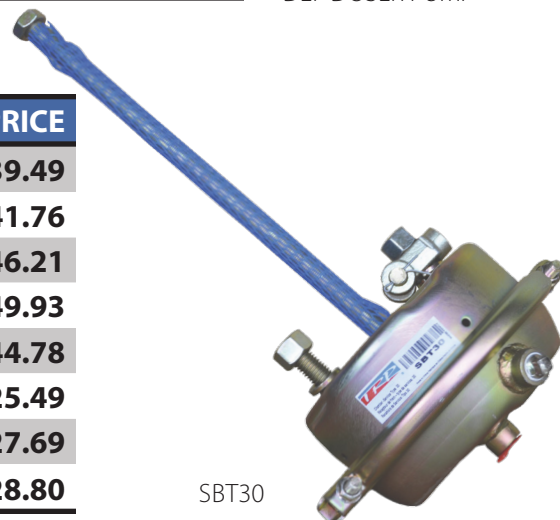
JOST TOP PLATES



CUMMINS GENUINE DEF DOSER PUMP

## TRP® BRAKE CHAMBERS

PART DESCRIPTION	PART #	PRICE
PIGGYBACK KIT 3030 CAGED STANDARD	SB3030PKC	<b>\$39.49</b>
3030 CHAMBER COMBO WITH CLEVIS	SB3030CC	<b>\$41.76</b>
PIGGYBACK-KIT 3030 CAGED LONG STROKE	SB3030PKLC	<b>\$46.21</b>
3030 CHAMBER- LONG STROKE COMBO	SB3030CL	<b>\$49.93</b>
3030 CHAMBER- INTRAXX 365MM ROD; 2.5"	SB3030CH	<b>\$44.78</b>
BRAKE SERVICE CHAMBER T30	SBT30	<b>\$25.49</b>
BRAKE SERVICE CHAMBER T20	SBT20	<b>\$27.69</b>
BRAKE SERVICE CHAMBER T24	SBT24	<b>\$28.80</b>



SBT30



# COUPONS



## ANNUAL SPECIALS

PART DESCRIPTION	COUPON CODE	DISCOUNT
TRW REMAN STEERING GEARS	Y234219	\$40 OFF
HORTON REMAN FAN CLUTCHES	Y234309	\$30 OFF
EATON CLUTCHES	Y234354	\$30 OFF
TRP® CLUTCHES	Y234356	\$30 OFF
BEZARES PTOS	Y234373	\$30 OFF
TRP® BUMPERS	Y234374	\$25 OFF
HORTON FAN CLUTCH REPAIR KIT	Y234306	\$20 OFF
TRP® CLUTCH INSTALLATION KITS	Y234357	\$20 OFF
TRP® STEEL JACKET BRAKE DRUMS	Y234377	\$20 OFF
EATON CLUTCH INSTALLATION KITS	Y234378	\$20 OFF
MERITOR X30 DRUMS	Y234379	\$20 OFF
TRP® ALUMINUM WHEELS	Y234215	\$15 OFF
TRP® FAN CLUTCH REPAIR KIT	Y234344	\$15 OFF
TRP® AIR DRYER ASSEMBLY	Y234245	\$12 OFF
TRP® AIR DISC BRAKE ROTORS	Y234246	\$12 OFF
TRP® POWER STEERING PUMPS	Y234230	\$10 OFF
TRP® NO REAM KING PIN KITS	Y234240	\$10 OFF
PACCAR STARTERS & ALTERNATORS	Y234328	\$10 OFF
TRP® MATTRESS	Y234351	\$10 OFF
TRP® BRAKE CHAMBER	Y234209	\$8 OFF
STEER KING BY ATRO	Y234231	\$8 OFF
TRP® STEEL WHEELS	Y234238	\$8 OFF
TRP® WINDSHIELD GLASS	Y234348	\$8 OFF



TRP® CLUTCHES



MERITOR X30 DRUMS



TRP® WINDSHIELD GLASS

## OPC EXCLUSIVE COUPONS

*DISCOUNTS ONLY AVAILABLE IN THE ONLINE PARTS COUNTER*

PART DESCRIPTION	COUPON CODE	DISCOUNT
DRIVETRAIN, TRANSMISSION	O235383	\$350 OFF
DRIVETRAIN, EATON CLUTCH	O234355	\$40 OFF
DRIVETRAIN, TRP® CLUTCH	O234375	\$40 OFF
FUEL CAP	O235072	\$6 OFF
DOOR HANDLE	O235074	\$6 OFF



*Sign up to start using the OPC today!*

# SEATS & MATTRESSES

Let your drivers rest easy while on the road!

## SEATS & COVERS

PART DESCRIPTION	PART #	PRICE
COVERALLS- HIGH BACK BLACK/BLACK	181704XN1161	\$43.40
COVERALLS- HIGH BACK BLACK/BROWN	181704XN1163	\$43.40
COVERALLS- HIGH BACK BLACK/GRAY	181704XN1165	\$43.40
COVERALLS- HIGH BACK KW LOGO	188704XN1161-227	\$106.10
COVERALLS- MID BACK BLACK/GRAY	182704XN1165	\$43.40
SEAT- LEGACY SILVER HB 2W AIR LUMBAR BLACK U	188900MW61	\$863.76
SEAT- HERITAGE SILVER HB 20" 15D 2W	189800FA631	\$588.10
SEAT- LEGACY SILVER HB 2W AIR LUMBAR GRAY UL	188900MW65	\$863.76
SEAT- LEGACY SILVER HB 2W AIR LUMBAR	188900FW631	\$747.27
SEAT- LEGACY LO SUSP HB 4W AIR LUMBAR BLACK	188409MW61	\$1,020.89
SEAT- HERITAGE SILVER HB 20" 15D 2W	189800FA635	\$552.99
SEAT- LEGACY LO SUSP MB 4W AIR LUMBAR BLACK	188598MW61	\$1,020.89
PINNACLE BLACK/BLACK DURALEATHER	187300MW661	\$1,355.19
SEAT- LEGACY SILVER HB 2W AIR LUMBAR	188900FW635	\$747.27



USE COUPON CODE

**M23SEP5338**

FOR \$100 OFF PINNACLE SEATS

USE COUPON CODE

**M23SEP4761**

FOR \$50 OFF LEGACY SEATS

## MATTRESSES

PART DESCRIPTION	PART #	PRICE
MATTRESS- 42X80X7 INNERSPRING STANDARD	MS42807S	\$183.36
MATTRESS- 42X80X6.5 FOAM PREMIUM	MF428065P	\$196.75
MATTRESS- 30X78X5.5 FOAM PREMIUM	MF307855P	\$141.44
MATTRESS- 32X79X7 INNERSPRING STANDARD	MS32797S	\$175.76
MATTRESS- 36X85X6.5 FOAM PREMIUM	MF368565P	\$189.61
MATTRESS- 36X80X7 INNERSPRING STANDARD	MS36807S	\$175.76
MATTRESS- 42X80X8 POCKETED COIL PREMIUM	MS42808P	\$251.09



USE COUPON CODE

**Y234351**

FOR \$10 OFF TRP® MATTRESSES

# TIMKEN BEARINGS

The right parts to give your truck its *bearings* back!



PART DESCRIPTION	PART #	PRICE
KIT- BRG HM212049, HM212011	SET413TRB	\$39.17
KIT- BRG HM218248, HM218210	SET414TRB	\$58.92
SET- BEARING 580/572	SET401TRB	\$47.88
SET- BEARING 594A/592A	SET403TRB	\$56.94
SET- BEARING NP034946, NP363298	SET429TRB	\$87.44
SET- BEARING NP899357, NP026773	SET427TRB	\$60.72
KIT- BRG 3782/3720	SET406TRB	\$26.88
SET- BEARING NP840302, NP053874	SET430TRB	\$74.25
SET- BEARING NP874005, NP435398	SET428TRB	\$41.66
BEARING	210661-1XSATRB	\$75.75
SET- BEARING HM518445, HM518410	SET415TRB	\$67.47



## FleetguardFIT LED Air Restriction Indicator

Monitor filter status  
in real time to save  
time and money

- LED indicator changes color based on restriction level.
- Easier and more accurate than conventional manual gauges.
- Can be integrated into vehicle telematics for data analysis.



MORE DETAILS



Visit [Fleetguard.com](https://www.fleetguard.com) to learn more.



# CLEARANCE CORNER

Parts from the Superior store that **MUST** go!



All listed Clearance Corner items are only available for purchase from the Rihm Kenworth dealership located in **Superior, WI**. If you are unable to visit the Superior location, please call the store directly for availability and pricing. Shipping options are also available upon request.

PART DESCRIPTION	PART #	QUANTITY
14 SPLINE ECA EXCHANGE INSTALL 2.000	122002-35EX	2
MEDIUM DUTY CLUTCH ASSEMBLY	107237-10	1
NO REAM KING PIN KIT	NRK181R	1
REMAN AD9 AIR DRYER*	R955065225XRMAN	2
OE REPLACEMENT TORQUE ROD	TR50-42685ATR	1
TORQUE ALUMINUM ROD AG200	K195-472	4
YOKE-HALF ROUND	6*3-4-821-1	1
HEATER-D/I ENGINE	CATB151	1
SXM ANTENNA FIELD FIX KIT	PP807048	5
YOKE	6*3-28-17	1
ADJUSTER CAP KIT	802643BXW	1
SS MIRROR HOOD MOUNT ASSEMBLIES	12153GR0	4
EYE AND PLASTIC WASHER BOLT	AA980	1
ABS TONE RING	105459	2
SEAL & SLEEVE REAR CRANK ASSEMBLY	23516969DDC	1
CAMSHAFT	2210J7628	1
BLUETOOTH MICROPHONE FOR DEA355	PP604240	4
CAMSHAFT	CS5493M	1

\*a core charge will be applied to all reman parts



NO REAM KING PIN KIT



CAMSHAFT

**LIMITED  
QUANTITIES  
AVAILABLE**

**Contact the Superior parts counter directly for a personalized quote!**

Rihm Kenworth - Superior | 4501 Tower Ave, Superior, WI 54880 | 715.395.5350

# SILENT SHIFTERS

The ALL NEW RoadWorks Mirror Polished 1.5" Dia. Stainless Steel Silent Shifter Kits are available for popular Peterbilt, Kenworth, and Freightliner models

## SHIFTER LENGTHS 30" | 36" | 42" | 48"

### Each Silent Shifter Kit Includes:

- Silent Armaflex Insolate Foam
- Air Line Kit
- Shift Collar
- Installation Hardware

**LIMITED LIFETIME  
WARRANTY**



SINGLE-BEND

DOUBLE-BEND

SIDE-WELD

SIDE-WELD  
08+ OLDER

DOUBLE-BEND  
09+ NEWER

**PETERBILT**

**FREIGHTLINER**

**KENWORTH**

**PATENT PENDING**

# #THANKATRUCKER TRIVIA!

1. What does NTDAW stand for?
2. What organization first started NTDAW?
3. What year was NTDAW first started?
4. More than what percent of U.S. communities rely exclusively on trucks to meet their freight transportation needs?
5. According to the NTDAW website, how many millions of Americans are professional truck drivers?
6. Heavy duty truck drivers must have a \_\_\_\_\_ license to operate a large truck.
7. Anyone can send a thank you to a truck driver by using the hashtag #thankatrucker on any \_\_\_\_\_ platform.

*Questions and answers were found using [ntdaw.trucking.org](https://ntdaw.trucking.org)*



*Say thank you to  
a truck driver this  
September 10<sup>th</sup> - 16<sup>th</sup>!*

Find the answers on page 26!

# FULL SERVICE LEASING

AN EXCEPTIONAL TRUCK LEASE EXPERIENCE

## Keeping YOUR Drivers Happy

Attract & retain the best drivers with comfortable, safe and well-maintained equipment.

Full Service Leasing (FSL) offers many benefits: no upfront capital investment; no maintenance or resale responsibilities; a reduction in operating costs associated with licensing and permitting; and an opportunity to better budget and plan for your business, to name a few.

Did you know that Full Service Leasing can help your company with driver retention and recruiting as well? We all know the demand for Class A CDL drivers is high. Drivers want a truck that is comfortable, safe and well-maintained. For an industry that has faced an acute driver shortage for years, finding and retaining drivers is crucial. How do you make your company stand out from the crowd?

When you lease a vehicle from Rihm Leasing, it allows you to provide your drivers with access to brand-new KENWORTH trucks that are fully outfitted with the newest truck technology and custom spec'd to meet your business needs. FSL trucks are renewed every cycle of the lease. Drivers are more likely to stay with your company when the equipment is new and well-maintained. Driving is a very demanding occupation, with long hours, and drivers' expectations are rising. Let Rihm Leasing help you keep your drivers in their seats!

NATIONAL  
TRUCK DRIVER  
APPRECIATION WEEK

September 10-16, 2023

**Thank you** to all the truck drivers who not only deliver our goods safely, securely, and on time, but also keep our highways safe.

#ThankATrucker

FOR LEASING & RENTAL INFORMATION

TIM CARROLL – 507.456.4344

tim.carroll@rihmfamilycompanies.com

MINNESOTA - WISCONSIN - SOUTH DAKOTA

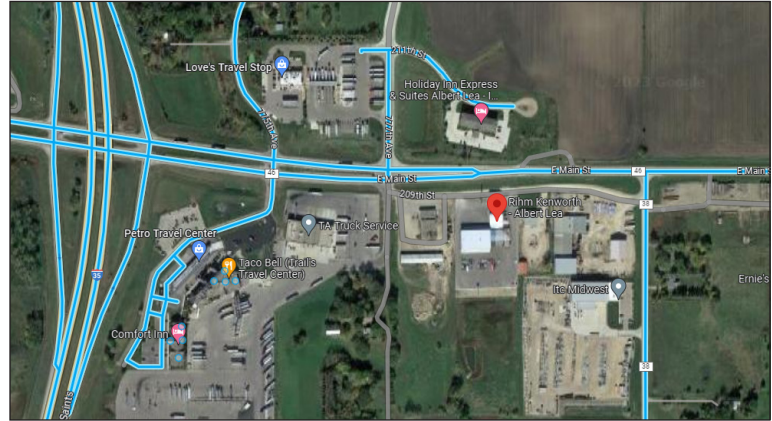


**RIHM LEASING**

# DEALERSHIP LOCATIONS WITH USED TRUCKS FOR SALE MAKING IT EASIER TO FIND YOUR NEXT TRUCK

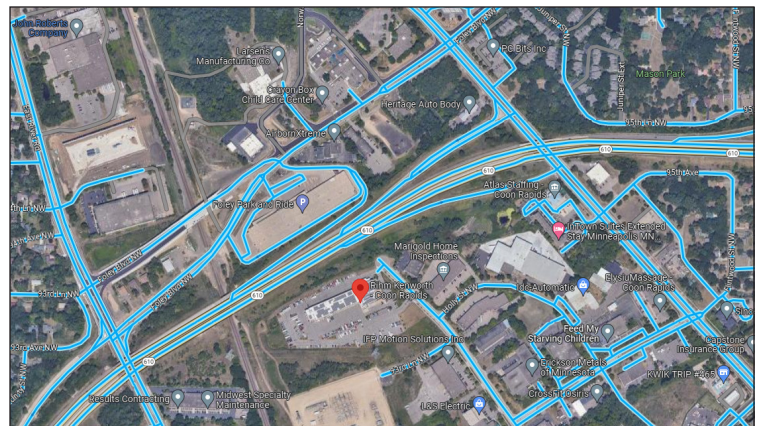
## ALBERT LEA, MN

77847 209TH STREET, ALBERT LEA, MN 56007



## COON RAPIDS, MN

9400 EVERGREEN BLVD, COON RAPIDS, MN 55433



## MANKATO, MN

2401 9TH AVENUE, MANKATO, MN 56001



## SAUK CENTRE, MN

805 SHAMROCK LANE, SAUK CENTRE, MN 56378

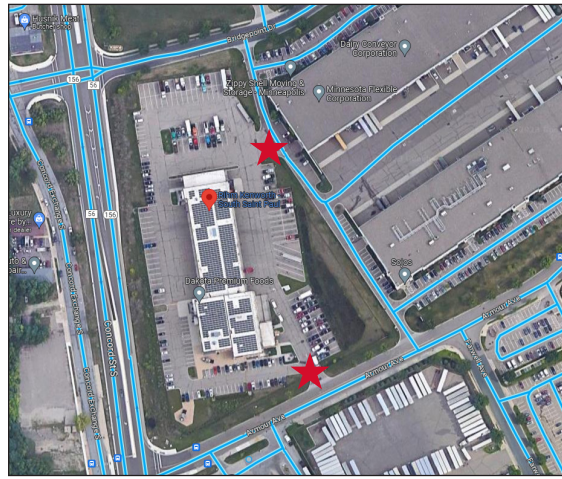


★ Located behind Trucker's Inn truck stop



# SOUTH ST. PAUL, MN

425 CONCORD STREET SOUTH  
SOUTH ST. PAUL, MN 550758



★  
2 entrance  
gate options

# SUPERIOR, WI

4501 TOWER AVE, SUPERIOR, WI 54880



# WINONA, MN

6830 MARTINA RD, MINNESOTA CITY, MN 55959



★ Located right off of highway 61

## CONTACT OUR USED TRUCK SALES EXPERTS FOR HELP FINDING YOUR NEXT TRUCK!

Albert Lea & Mankato, MN  
Ben Scheidel | C: 507.720.8585

Sauk Centre, MN  
Doug Warren | C: 612.860.3052

Superior, WI  
Corey Hulst | C: 715.817.5388

Coon Rapids, MN  
Art Lund | C: 651.491.9544

South St. Paul, MN  
Cliff Cadwallader | C: 651.442.7393

Winona, MN  
John Busch | C: 507.279.0912

# LOW ON CASH?

**FINANCING OPTIONS AVAILABLE WITH \$0 DOWN ON NEW & USED TRUCKS!**

## WHY CHOOSE TO FINANCE A TRUCK?

In some cases companies may need to put money for a down payment or purchase towards other investments that will help grow the company faster. In situations like this, or any time that monetary resources may be low, choosing to finance equipment instead of purchasing can allow a company to generate revenue, or increase efficiencies throughout the company, while still keeping enough capital on-hand to put towards other growth opportunities or investments.



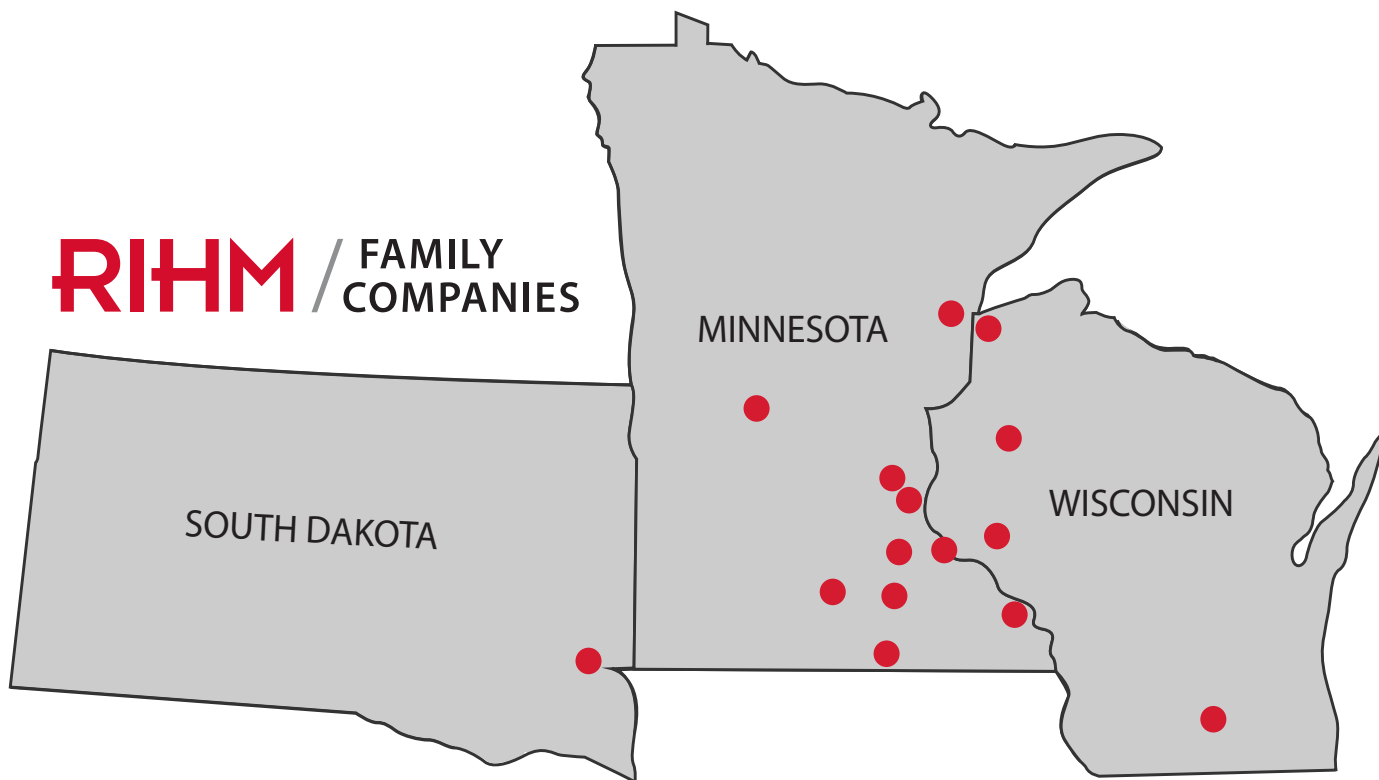
*Cash down amounts are dependent on approved credit.*

**CONTACT US TO FIND THE BEST FINANCING OPTION FOR YOU!**

Lisa Mick | 651.649.5607 | [lisa.mick@rihmfamilycompanies.com](mailto:lisa.mick@rihmfamilycompanies.com)

# CONTACTS & LOCATIONS

MULTIPLE LOCATIONS - FOR YOUR CONVENIENCE



MINNESOTA	WISCONSIN	SOUTH DAKOTA
<p><b>Albert Lea</b> 77847 209th St Albert Lea, MN 56007 507.552.1340</p>	<p><b>Owatonna</b> 3205 Hoffman Dr NW Owatonna, MN 55060 507.451.2990</p>	<p><b>Barron</b> 1504 Guy Ave Barron, WI 54812 715.637.1301</p>
<p><b>Cloquet</b> 801 Industry Ave Cloquet, MN 55720 218.879.2473</p>	<p><b>Red Wing</b> 860 Bench St Red Wing, MN 55066 651.388.7067</p>	<p><b>Durand</b> 904 West Prospect St Durand, WI 54736 715.279.3210</p>
<p><b>Coon Rapids</b> 9400 Evergreen Blvd Coon Rapids, MN 55433 651.236.6080</p>	<p><b>Sauk Centre</b> 805 Shamrock Ln Sauk Centre, MN 56378 320.352.8540</p>	<p><b>Madison</b> 6025 Femrite Dr, Unit #1 Madison, WI 53718 608.224.0133</p>
<p><b>Mankato</b> 2401 9th Ave Mankato, MN 56001 507.550.3800</p>	<p><b>South St. Paul</b> 425 Concord St South South St. Paul, MN 55075 651.646.7833</p>	<p><b>Superior</b> 4501 Tower Ave Superior, WI 54880 715.395.5350</p>
<p><b>Northfield</b> 1720 Cannon Rd Northfield, MN 55057 507.645.1657</p>	<p><b>Winona</b> 6830 Martina Rd Minnesota City, MN 55959 507.452.4400</p>	<p><b>Sioux Falls</b> 4001 North Jessica Ave Sioux Falls, SD 57104 605.339.2927</p>

1. National Truck Driver Appreciation Week; 2. American Trucking Associations; 3. 1988; 4. 80%; 5. 3.5 Million; 6. CDL; 7. Social Media

# PHOTO HIGHLIGHTS FROM THE 2023 CUSTOMER APPRECIATION DAYS

